

WATER PUMP

WX15

PARTS CATALOGUE

2



WX15

FOREWORD INDEX

1

ENGINE GROUP

2

FRAME GROUP

3

PART NUMBER INDEX

4

PART NAME INDEX

5

Instruction for use of parts catalogue

- **This parts catalogue was prepared based on the latest information available as of February 10, 2005.**
- See the parts catalogue news for any revision that is made after February 10, 2005.
- **Always specify the part number when ordering a part.**
 - Check the model, type, serial numbers, color, maker, and the size as needed before ordering a part.
 - Note that the illustrations (part drawings) can differ from the actual parts in shape. They are given just to help you to refer to the parts.
- **When modifications or additions to this parts catalogue are made, a revised edition will be issued at an appropriate time, with successively progressing revision numbers on the cover. We recommend obtaining such revisions in order to keep your parts catalogue up-to-date at all times. To check whether a parts catalogue revision has been issued, please contact your Honda distributor.**

Initial version issue date **August 20, 1998**
Honda Motor Co., Ltd.

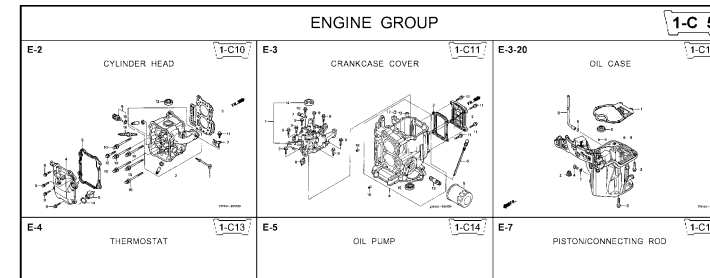
CONTENTS

	Page	Address No.	
● How to refer to the part information	2	B 2	1
● Part catalogue structure	3	B 3	
● When the parts were revised	4	B 4	
● Abbreviations used in the parts catalogue.....	4	B 4	
● How to check the part block and serial numbers.....	5	B 5	
● Models, parts catalogue codes and applicable serial numbers	6	B 6	
● Features of each type.....	8	B 8	
● Fuel hose, general purpose hoses and vinyl hose.....	9	B 9	
● FLAT RATE SERVICE TIME.....	10	B10	
● Illustrated index	15	B15	
● ENGINE GROUP.....	18	D 1	2
● FRAME GROUP.....	36	F 1	3
● PART NO. INDEX.....	40	G 1	4
● PART NAME INDEX.....	42	H 1	5



How to refer to the part information

A Reference with "Illustrated index"



B Reference with "Part number index"

PART NO. INDEX

Part Number	Address	Page	Ref.	Part Number	Address	Page
06000				15212-ZW9-000	1-C14	3C
06316-ZW9-000	1-G9	88	1	15220-ZW9-003	1-C14	3C
11000				15332-ZW9-000	1-E8	55
11300-ZW9-405	1-C11	27	1	15332-ZW9-A30	1-E11	5E
11300-ZW9-406	1-C11	27	1	15400-PFB-004	1-C11	27
11340-ZW9-000	1-C11	27	2	15422-ZW9-000	1-C14	3C
11342-ZW9-000	1-C11	27	3	15473-881-000	1-C14	3C
11381-ZW9-003	1-C12	28	1	15474-ZW9-000	1-C14	3C
				15611-921-000	1-C10	2E
				15655-ZW9-000	1-C11	27
				16000		
12000				16010-ZV4-005	1-D4	3E
12000-ZW9-405ZA	1-C11	27	4	16011-ZV4-005	1-D4	3E
12155-ZV4-A00	1-C13	29	1	16013-ZW9-003	1-D4	3E
12166-ZW9-000	1-C10	26	1	16016-ZW9-003	1-D4	3E
12209-GB4-681	1-C16	32	1	16016-ZW9-721	1-D4	3E
12210-ZW9-405ZA	1-C10	26	2	16023-ZW9-003	1-D4	3E
12216-ZE2-300	1-E8	55	1	16024-ZV4-650	1-D4	3E
	1-E11	58	1	16028-ZV4-650	1-D4	3E

C Reference with "Part name index"

PART NAME INDEX

Part name	Address	Page	Ref.
[A]			
ABSORBER , FUEL	1-E15	62	5
ARMATURE COMP.	1-D11	43	7
ARM COMP. , LINK JOINT	1-G6	85	18
ARM COMP. , SHIFT LINK	1-G6	85	14
ARM COMP. , TILT	1-F15	79	20
ARM , FUEL PUMP ROCKER	1-C16	32	4
ARM , REVERSE LOCK	1-F15	79	18
ARM , SHIFT LINK	1-F11	74	7
ARM , STOPPER	1-D1	33	12
ARM , THROTTLE REMOTE	1-F11	74	6
ARM , VALVE ROCKER	1-C16	32	3
[B]			
BAG , TOOL , 160MM	1-G5	84	10
BAND	1-G6	86	37
BAND B1 , WIRE	1-F6	69	1
BAND , CORD	1-F3	67	18
BAND , TUBE CLIP , 11MM	1-E15	63	20
BAND , TUBE CLIP , 12.5MM	1-E15	63	19

Address No. 1-C10

E-2 CYLINDER HEAD

Block No.

Ref No.

ZW83-EG200

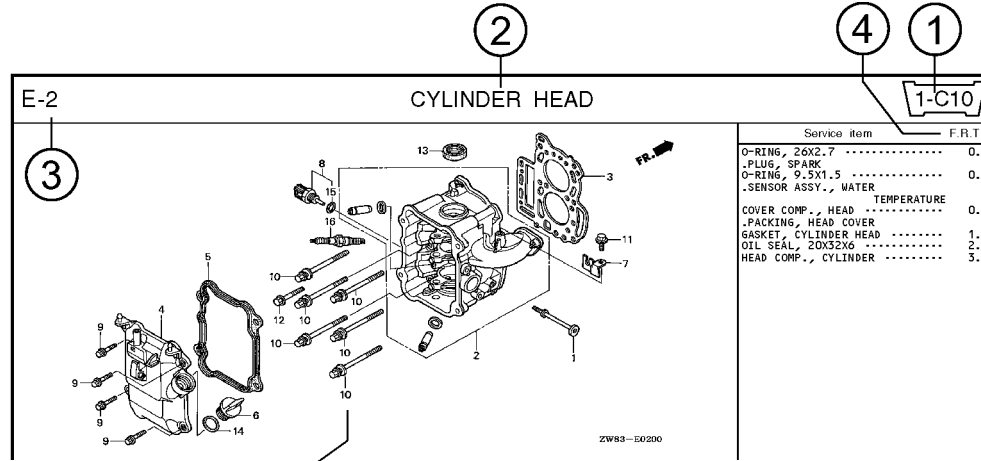
Ref. No.	Part No.	Description	Reqd. QTY						Serial No.	Parts catalogue code
			9901	9901	1001	1001	1001	1001		
1	12166-ZW9-000	STOPPER, ENGINE SIDE	2	2	2	2	2			
2	12210-ZW9-000ZA	HEAD COMP., CYLINDER	1	1	1	1	1			
3	12251-ZW9-003	GASKET, CYLINDER HEAD	1	1	1	1	1			
4	12310-ZW9-000	COVER COMP., HEAD	1	1	1	1	1			
5	12312-ZW9-000	PACKING, HEAD COVER	1	1	1	1	1			
6	15611-921-000	CAP, OIL (NO GAUGE)	1	1	1	1	1			
7	16617-ZW9-000	HOLDER, CABLE	1	1	1	1	1	SC,SG		
	16617-ZW9-010		1	1	1	1	1	1001800 LHC,LHD		
			1	1	1	1	1	1001801	LHC,LHD	
8	35673-ZW5-003	SENSOR ASSY., WATER	1	1	1	1	1			
9	90003-ZW9-000	BOLT, FLANGE, 6X22	4	4	4	4	4			
10	90007-ZW9-003	BOLT, FLANGE, 8X83	6	6	6	6	6			
11	90011-ZW9-000	BOLT, FLANGE, 6X14(CT200)	1	1	1	1	1			
12	90020-ZW9-000	BOLT, FLANGE, 8X40	2	2	2	2	2			
13	91305-K49-003	OIL SEAL, 20X32X6	1	1	1	1	1			
14	91301-805-000	O-RING, 26X2.7	1	1	1	1	1			
15	91307-PK2-005	O-RING, 9.5X1.5(HONDA KIKAKI)	1	1	1	1	1			
16	98059-55916	PLUG, SPARK (CR5EH-9)	2	2	2	2	2			
	98059-55926	PLUG, SPARK (U16FER9)	2	2	2	2	2			

Service item F.R.T.

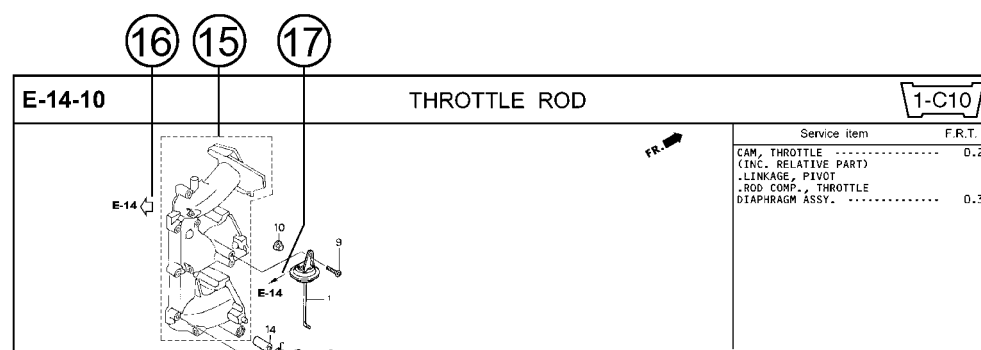
- O-RING, 26X2.7 0.1
- PLUG, SPARK 0.2
- O-RING, 9.5X1.5 0.2
- SENSOR ASSY., WATER 0.3
- COVER COMP., HEAD 0.3
- PACKING, HEAD COVER 1.8
- GASKET, CYLINDER HEAD 2.4
- OIL SEAL, 20X32X6 2.4
- HEAD COMP., CYLINDER 3.1

Page No. 2000.09.20 E

Part catalogue structure



Ref. No.	Part No.	Description	Reqd. QTY						Serial No.	Parts catalogue code
			BF 93D1	BFP 93D1	BF 10D1	BFP 10D1	BF 10B1	BFP 10B1		
1	12166-zw9-000	STOPPER, ENGINE SIDE	2	2	2	2	2			
2	12210-zw9-000ZA	HEAD COMP., CYLINDER *NH8*	1	1	1	1	1			
3	12251-zw9-003	GASKET, CYLINDER HEAD	1	1	1	1	1			
4	12310-zw9-000	COVER COMP., HEAD	1	1	1	1	1			
5	12312-zw9-000	PACKING, HEAD COVER	1	1	1	1	1			
6	15611-921-000	CAP, OIL (NO GAUGE)	1	1	1	1	1			
7	16617-zw9-000 16617-zw9-010	HOLDER, CABLE	1	1	1	1	1	SC,SG 1001800 LHC,LHD		



① Address number

- Address No. is provided (in place of the page No.) to help you refer to the part with the part No. or part name.

② Block title ③ Block number

④ Service item/Flat rate time

⑤ Reference number

- Title number marked with the parenthesis or parentheses indicates that it continues from the previous page.

⑥ Part number ⑦ Honda color code

⑧ Description

⑨ Assemblies

- Sections framed with broken lines in the exploded view drawings are available as complete assemblies. (Their individual parts can also be obtained.)

⑩ Color description

⑪ Note

- Notes are shown with the parentheses in the part name column.

⑫ Required quantity

- Required QTY shown in the parenthesis or parentheses indicates the optional part.
- Required QTY marked with "N" Indicates the optional part that should be selected as needed.
- Required QTY indicates the number of the part used in the block.

⑬ Serial number

⑭ Type

- When the type column is blank, it indicates that the part is applicable to all types.
- As the type of the actual unit may differ from the "parts catalogue, type" please refer to "Models, types and applicable serial numbers" for confirmation.

⑮

- Parts enclosed within a dotted line are covered in a different block.

⑯

- A hollow arrow indicates the block No. for the parts enclosed within a dotted line .

⑰

- A solid arrow indicates the block No. the part in question is connected to.

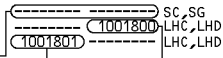
When the parts were revised



Be sure to check the serial number!!



Ref. No.	Part No.	Description	Reqd. QTY						Serial No.
			BF 9.9D1	BFP 9.9D1	BF 10D1	BFP 10D1	BF 10B1	BFP 10B1	
1	12166-ZW9-000	STOPPER, ENGINE SIDE	2	2	2	2	2	2	
2	12210-ZW9-000ZA	HEAD COMP., CYLINDER							
		NH8.....DARK GRAY	1	1	1	1	1	1	
3	12251-ZW9-003	GASKET, CYLINDER HEAD	1	1	1	1	1	1	
4	12310-ZW9-000	COVER COMP., HEAD	1	1	1	1	1	1	
5	12312-ZW9-000	PACKING, HEAD COVER	1	1	1	1	1	1	
6	15611-921-000	CAP, OIL (NO GAUGE)	1	1	1	1	1	1	
7	16617-ZW9-000	HOLDER, CABLE (###)	1	1	1	1	1	1	
	16617-ZW9-010		1	1	1	1	1	1	



The number has been used from the initial model without revision.

When shown at the left side, it is applicable to the models of No.1001801 and the subsequent numbers.

When shown at the right side, it is applicable to the models up to No.1001800.

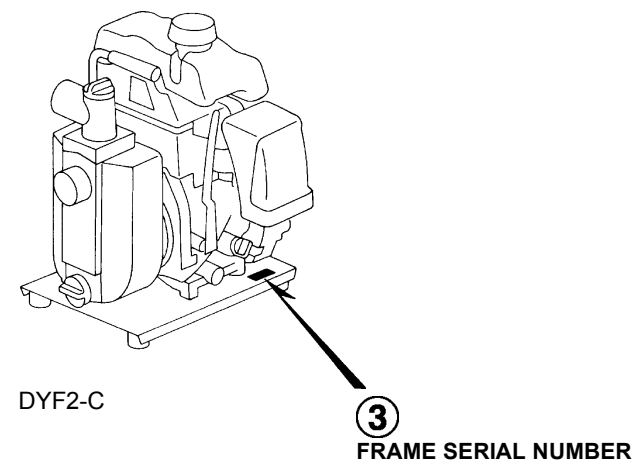
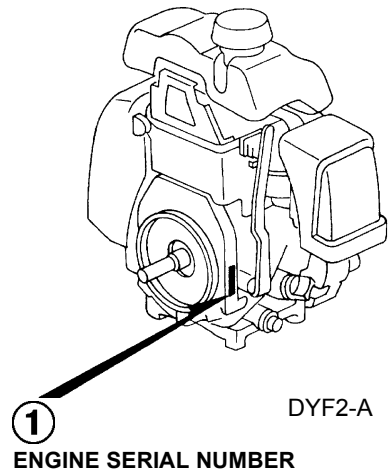
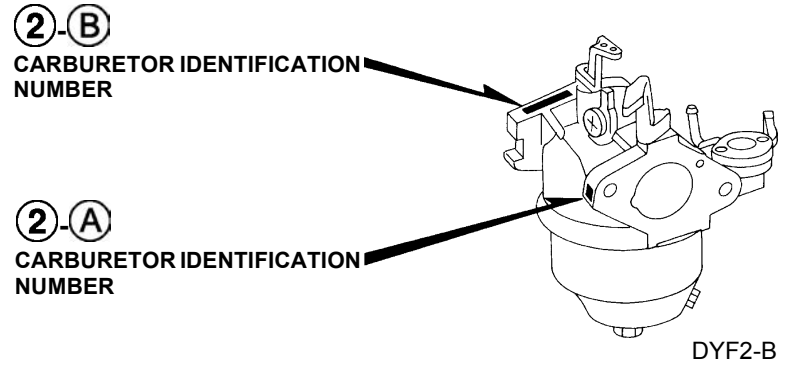
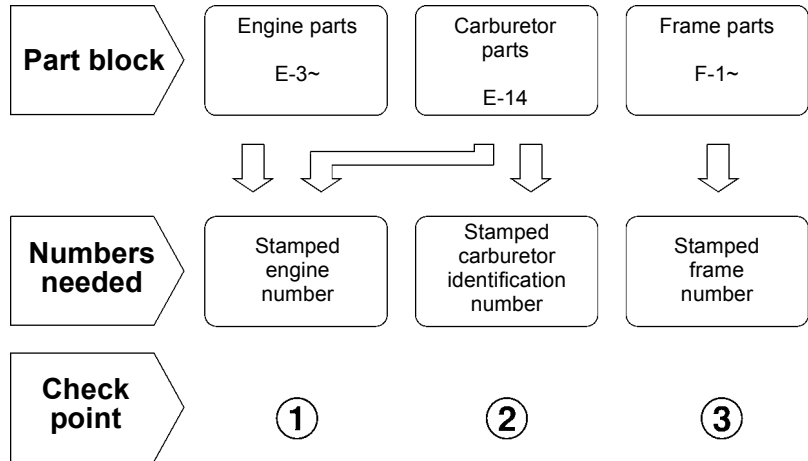
• The parts listed with "###" at the end of the parts name have limited supply period (parts not for sale).

Abbreviations used in the parts catalogue

• The following abbreviations are used in the parts name column.

- | | |
|--|-----------------------------|
| A Ampere | FR.Front |
| A.C. Alternating current | IN.Inlet |
| ASSY. Assembly | L (100L) .Link (100 Links) |
| AT. Automatic transmission | L.Left |
| C.D.I. Capacitive discharge ignition | MMMillimeter |
| COMP. ... Complete | MT.Manual Transmission |
| D.C. Direct current | P.T.O.Power take off |
| EX. Exhaust | R.Right |
| G.F.C.I ... Ground fault circuit interruptor | RR.Rear |
| HEX. Hexagonal | STD.Standard |
| H.S.T. Hydrostatic transmission | T (22T) ...Tooth (22 Teeth) |
| | V Volt |
| | WWatt |

How to check the part block and serial numbers



Models, parts catalogue codes and applicable serial numbers

1

- Models, parts catalogue codes and applicable serial Nos. given in this parts catalogue can be identified as follows.

Model	Type	Parts catalogue type	Engine		Applicable engine serial No.	Applicable frame serial No.	Applicable carburetor identification No.
			Model	Type			
WX15	CX1	CX1	GXH50	AY2	GCAL-1000001~1221402	WZBY-1000001~1014400	BF32D A, BF32E A / C
		CX1/A			GCAL-1300001~1499999	WZBY-1014401~1099999	BF32E C
		CX1/B			GCAL-1500001~	WZBY-1100001~	BF32E C / D / E
	DX2	DX2		AY7	GCAL-1000001~1209794	WZBY-1000001~1015368	BF32D A, BF32E A / C
		DX2/A			GCAL-1300001~1499999	WZBY-1015369~1099999	BF32E C
		DX2/B			GCAL-1500001~	WZBY-1100001~	BF32E C / D / E
	DX3	DX3		AY7	GCAL-1000001~1209794	WZBY-1000001~1015364	BF32D A, BF32E A / C
		DX3/A			GCAL-1300001~1499999	WZBY-1015365~1099999	BF32E C
		DX3/B			GCAL-1500001~	WZBY-1100001~	BF32E C / D / E
	D1	D1		AY6	GCAL-1000001~1200726	WZBY-1000001~1014121	BF32D A, BF32E A / C
		D1/A			GCAL-1300001~1499999	WZBY-1014122~1099999	BF32E C
		D1/B			GCAL-1500001~	WZBY-1100001~	BF32E C / D / E
	D3	D3		AY6	GCAL-1000001~1200726	WZBY-1000001~1014130	BF32D A, BF32E A / C
		D3/A			GCAL-1300001~1499999	WZBY-1014131~1099999	BF32E C
		D3/B			GCAL-1500001~	WZBY-1100001~	BF32E C / D / E
	EX1	EX1		AY4	GCAL-1000001~1220729	WZBY-1000001~1014153	BF32D A, BF32E A / C
		EX1/A			GCAL-1300001~1499999	WZBY-1014154~1099999	BF32E C
		EX1/B			GCAL-1500001~	WZBY-1100001~	BF32E C / D / E

Model	Type	Parts catalogue type	Engine		Applicable engine serial No.	Applicable frame serial No.	Applicable carburetor identification No.
			Model	Type			
WX15	EX3	EX3	GXH50	AY4	GCAL-1000001~1220729	WZBY-1000001~1011566	BF32D A, BF32E A / C
		EX3/A			GCAL-1300001~1499999	WZBY-1011567~1099999	BF32E C
		EX3/B			GCAL-1500001~	WZBY-1100001~	BF32E C / D / E
	E1	E1		AY3	GCAL-1000001~1220650	WZBY-1000001~1014272	BF32D A, BF32E A / C
		E1/A			GCAL-1300001~1499999	WZBY-1014273~1099999	BF32E C
		E1/B			GCAL-1500001~	WZBY-1100001~	BF32E C / D / E
	E3	E3		AY3	GCAL-1000001~1220650	WZBY-1000001~1014211	BF32D A, BF32E A / C
		E3/A			GCAL-1300001~1499999	WZBY-1014212~1099999	BF32E C
		E3/B			GCAL-1500001~	WZBY-1100001~	BF32E C / D / E
	U1	U1		AY5	GCAL-1000001~1221410	WZBY-1000001~1014145	BF32D A, BF32E A / C
		U1/A			GCAL-1300001~1499999	WZBY-1014146~1099999	BF32E C
		U1/B			GCAL-1500001~	WZBY-1100001~	BF32E C / D / E
	U3	U3			GCAL-1000001~1221410	WZBY-1000001~1013866	BF32D A, BF32E A / C

* Of carburetor identification numbers, only the portions underlined in the example below are used for registration.

BF 32D A KC 十
 (A) (B)

Features of each type

1

- See the following table for the features of each type.

Specifications		Model	WX15										
		Type	CX1	DX2	DX3	D1	D3	EX1	EX3	E1	E3	U1	U3
Oil alert			●	●	●			●	●				
Hose coupling	Standard			●		●		●		●		●	
	Male coupler				●		●		●		●		●
	Female coupler				●		●		●		●		●
Suction hose				●									

Fuel hose, general purpose hoses and vinyl hose

- The standard part fuel hose, general purpose hose and vinyl hose may be substituted by the coiled bulk part.
- When ordering the standard part fuel hose, general purpose hose and vinyl hose use the bulk part number written in the parts catalog in brackets () underneath the part name.
- When exchanging the hose, cut and use at the specified length as mentioned in the part name.
(For the method of cutting the bulk part, and method of filling out orders etc., please refer to the instructions issued with the bulk part.)

Bulk part number of fuel hose, general purpose hose and vinyl hose.

Example: 9 5 0 0 1 - 7 5 0 0 1 - 5 0 M

Bulk part number:
Refers to the bulk part.

Marking code (fuel hose and general purpose hose)

Change code (Vinyl hose)

Indicates number mark or change sequence, however, the code for the bulk part must be strictly 0 (zero).

Types of code:

- | | | | | | |
|-------------|--|----------------|--|--------------|---|
| • Fuel hose | 2: Red outside braid
(3 mm inside dia. only) | • General hose | 1: Ash gray
2: Ash gray
3: Black
5: Black | • Vinyl hose | 1: Clear
2: Black
3: Light red
6: Light red
7: Pale black |
| | 5: Black inside braid | | | | |
| | 3: Red (3 mm inside dia. only) | | | | |
| | 4: Ash gray with red stripe
(3 mm inside dia. only) | | | | |
| | 6: Black | | | | |

Lengths:

- 001: 1 m (standard)
003: 3 m
008: 8 m } Application or specification of some parts is not settled.

I.D code: (fuel hose and general purpose hose)

- | | | | | |
|------------|--------------------|--------------------|-----------------------------|-----------------------------|
| 30: 3.0 mm | 50: 5.0 mm | 70: 7.0 mm | 11: 11 mm | 12: 12 (outside dia. 17) mm |
| 35: 3.5 mm | 55: 5.3 mm, 5.5 mm | 75: 7.3 mm, 7.5 mm | 91: 12 (outside dia. 15) mm | 14: 14 mm |
| 45: 4.5 mm | 65: 6.5 mm | 80: 8.0 mm | 92: 12 (outside dia. 16) mm | 17: 17 mm |

ID./OD. code: (vinyl hose)

- | | | | | |
|-------------------------|--------------------------|---------------------------|---------------------------|---------------------------|
| 01: ID. 2.9, OD. 6.8 mm | 12: ID. 5.0, OD. 7.0 mm | 21: ID. 8.0, OD. 9.0 mm | 37: ID. 11.0, OD. 15.0 mm | 50: ID. 16.0, OD. 19.0 mm |
| 03: ID. 3.0, OD. 6.0 mm | 10: ID. 5.0, OD. 8.0 mm | 23: ID. 8.0, OD. 12.0 mm | 38: ID. 12.0, OD. 13.0 mm | 55: ID. 17.5, OD. 20.5 mm |
| 05: ID. 3.5, OD. 6.5 mm | 11: ID. 5.0, OD. 9.0 mm | 25: ID. 9.0, OD. 11.0 mm | 39: ID. 12.0, OD. 14.0 mm | 60: ID. 22.0, OD. 27.0 mm |
| 07: ID. 4.0, OD. 7.0 mm | 14: ID. 6.0, OD. 9.0 mm | 27: ID. 9.0, OD. 13.0 mm | 40: ID. 12.0, OD. 16.0 mm | |
| 08: ID. 4.5, OD. 6.5 mm | 17: ID. 7.0, OD. 9.0 mm | 33: ID. 10.0, OD. 14.0 mm | 43: ID. 13.0, OD. 15.0 mm | |
| 09: ID. 4.5, OD. 8.0 mm | 19: ID. 7.0, OD. 11.0 mm | 36: ID. 11.0, OD. 13.0 mm | 45: ID. 14.0, OD. 18.0 mm | |

Hose type:

- 1: Fuel hose
3: Vinyl hose
5: General hose

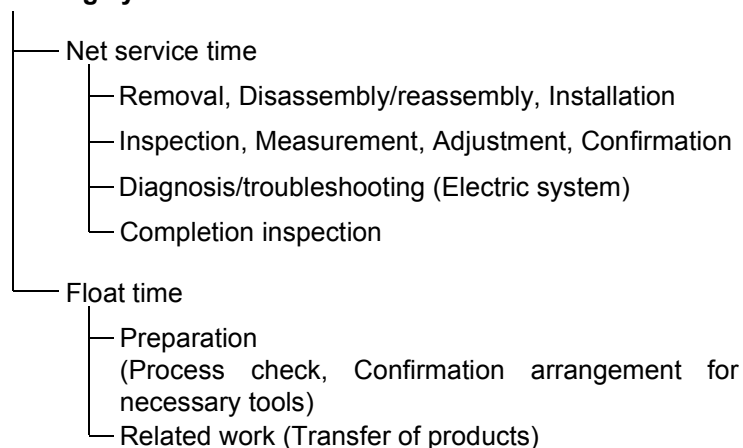
⊙ **CAUTION: It is DANGEROUS to confuse the fuel hose with the general purpose hose or vinyl hose.**

Never use a general purpose hose or vinyl hose in place of a fuel hose or vice versa. Always use the correct bulk part in the parts catalogue, according to the service manual or the instructions issued with the bulk part.

FLAT RATE SERVICE TIME

Flat rate service time (FRT) means the standard time required to service a product, which is listed in this manual to help the dealers control the actual working process and calculate the service charge by using it as a guide.

FRT setting system



* Float time is set by multiplying the net service time by a given coefficient.

Editorial style

The service items shown in the text are listed with the exchange work time for the repair sales parts as the subject. Other representative service items not using repair parts (removal/installation, adjustment, inspection/measuring, and other work) are listed collectively in the list in the preface, classified according to the work.

FRT setting standard

- Decimal system (in unit of 0.1) is adopted to set FRT as it is convenient to calculate the wage.
Example: (0.1) → 6 minutes, (0.2) → 12 minutes
[Labor cost per hour] x [FRT] = [Wage]
- FRT is set with a hand tool.
- Service items and FRT can be subject to change depending on development of tools and service equipment and improvement in service procedure.

Work procedure

- As the work procedure is set with the work time according to the method in the separate Service Manual, refer to this Manual as required.
- Work methods permitting servicing in the shortest time still permitting assurance of safe work and product warranty are used for the setting of service items not listed in the Service Manual.
- Work basically is to be performed by one person, and when two or more people are required, setting is done as the total time for the number of people.
- The set value for the technological level of the workers uses a person with three years of experience in the repair of Honda products as the standard.
- Special tools and service equipment used to set FRT are those specified or recommended in Service Manual.

Service item whose FRT is not presented

- Accessories and service parts that are not listed to use in this manual.
 - Locations with little aging deterioration or breakage during normal use.
 - Service work that can be finished by one touch.
 - Service work that is seldom done (i.e. extremely small causes of trouble and service frequency).
 - Products and parts whose location for installation differs according to its status of use and application.
- * When FRT is not presented, please calculate wages based on appropriate actual work time.

Operation not included of FRT

- Oil and coolant water drainig, Waiting time for warming up operation and etc..
- Additional operation that involves removal/installation of standard exterior equipment.
- Indirect time spent for service by visiting the customer, trade-in, and delivery.
- Indirect time required for ordering and delivery of parts.
- Cost for grease, adhesive agent, etc. used for service work.

1

**Explanation of FRT by using an example
(The example may differ from the actual presented items)**

Ref. No.	L.O.N.	(Relative ref. Number) Description	F.R.T.
①	1111L1	(1, 3, 4, 7) VALVE, INTAKE 4.1	②
②		• NOTE: OHV type	③
③	1111L1A	• Includes: Engine removal and installation One head (intake all) add 1.4	④

- ① Reference No. of the illustration of part that shows location of the replacement work.
- ② FRT is an abbreviation of Flat Rate Time indicating the standard service time required for the replacement.
- ③ LON is an abbreviation of Labor Operation Number, and it is a classification of the service items by the work unit code.

The same operation code is used regardless of the models.

Standard operation is indicated with 6 digits code, and additional operation is indicated with 7 digits code.

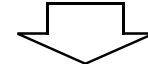
- ④ Indicating the intake valve replacement and FRT4.1.
- ⑤ Indicating FRT1.4 that will be added when additional operation (whole intake side of one cylinder head) is done in association with intake valve replacement.

- ⑥ Indicating work condition or application condition of the service item.
- ⑦ Indicating work contents that are included in the service item.
- ⑧ Indicating a reference No. whose operation and time are the same as FRT4.1 for the intake valve.

(The application range is limited to the service items without an LON setting within a same block.)

**How to refer to the service item by using the sample
(intake valve replacement)**

Open to the page of the block where the intake valve's spare part illustration is shown.



Look for the intake valve illustration, and refer to the service item and FRT that agree with the reference No.

Indication mark for the listing of service items that continues to the following page

Ref. No.	L.O.N.	(Relative ref. Number) Description	F.R.T.
2	1111L1	VALVE, INTAKE	4.1
	.	.	.
	.	.	.

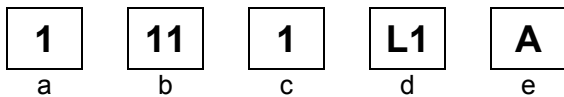
+

Mark indicated at the last line.

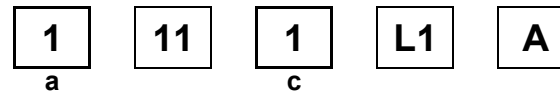
Indication of the block with no setting of FRT

Ref. No.	L.O.N.	(Relative ref. Number) Description	F.R.T.
NO INFORMATION			

• **LON code system**



- a) Category code..... Engine
- b) Location/function code Engine upper
- c) Operation code..... Replace
- d) Operation sequence number (Unit code can be shown with alphabet)
 - Intake valve
 - (No regular rule of code)
- e) Additional code One head (intake all)
 - (No regular rule of code)



a) **Category codes and classification**

Code	Category
1	Engine
2	Power drive
3	Fuel & Exhaust
4	Frame & Body
5	Steering
6	Electrical
7	Axle & Brake
8	Control system
9	-
0	Attachments

c) **Operation codes and classification**

Code	Operation category
1	Replace, Removal/Installation, Change
2	Overhaul
3	Adjust, Rotation
4	(Paint-related work: Top-coat)
5	Test, Inspect/diagnose, Measurement
6	(Overhaul-related work: Rebore)
7	(Overhaul-related work: Reseal)
8	(Resurface)
9	(Paint-related work: Refinish)
0	Repair, Cleaning, Air bleeding



Major service items without using spare parts

(1) Removal/Installation, (2) Adjustment, (3) Inspection/Measurement, (4) Overhaul, (5) Other work

E: Engine, T: Transmission, D: Drive system, B: Body and related parts

(1) Removal/Installation

Set with the parts configuration in the status of being removed from the product.

	LON	DESCRIPTION	FRT
E	1001A1	ENGINE AND PUMP-REMOVAL/INSTALLATION	0.2

(2) Adjustment

	LON	DESCRIPTION	FRT
E	1113A1	VALVE CLEARANCE-ADJUSTMENT NOTE: For 1 product	0.3
	1163A0	CONTROL, THROTTLE/GOVERNOR-ADJUSTMENT	0.2
	3113A2	CARBURETOR IDLE-ADJUSTMENT	0.2

(3) Inspection, Measurement, Cleaning

	LON	DESCRIPTION	FRT
E	1105A0	ENGINE OIL-INSPECTION	0.1
	3120A0	AIR CLEANER-CLEANING INCLUDES: Air cleaner-inspection	0.2
	6140A0	SPARK PLUG-CLEANING INCLUDES: Spark plug gap-adjustment NOTE: For 1 product	0.2
	6145A0	SPARK-TEST NOTE: All cylinders	0.2

(4) Overhaul

Work condition: The required Measurements, inspections, adjustments, and cleaning/washing of each part are performed, including the main body removal/installation work and the replacement of defective parts.

	LON	DESCRIPTION	FRT
E	3112A0	CARBURETOR-OVERHAUL INCLUDES: All necessary adjustment	0.4

(5) Other work

	LON	DESCRIPTION	FRT
E	1101E1	ENGINE OIL-CHANGE INCLUDES: Engine oil-inspection	0.2

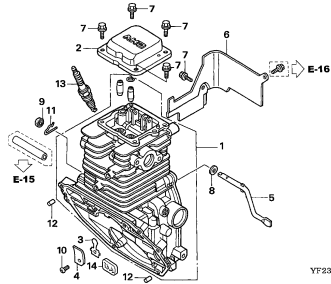
ENGINE GROUP

B15

E-3

CYLINDER BARREL

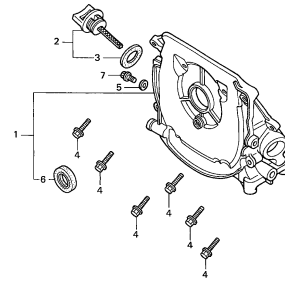
D 1



E-3-10

OIL CASE

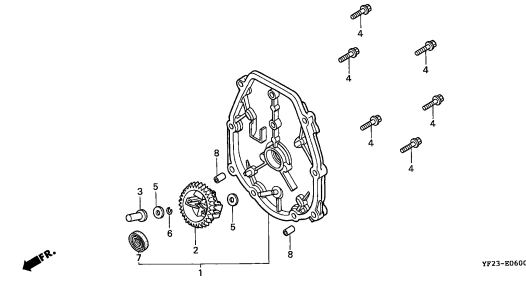
D 2



E-6

CRANKCASE COVER

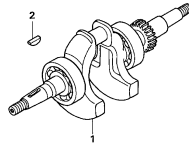
D 3



E-7

CRANKSHAFT

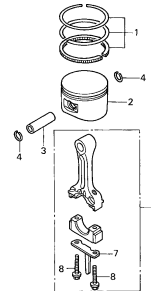
D 4



E-8

PISTON/CONNECTING ROD

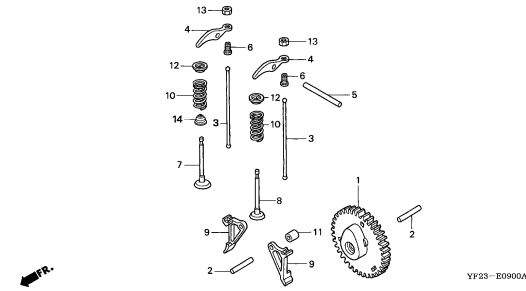
D 5



E-9

CAMSHAFT

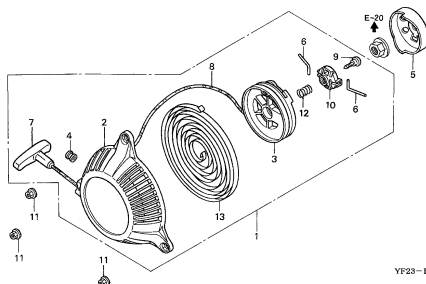
D 6



E-11

RECOIL STARTER

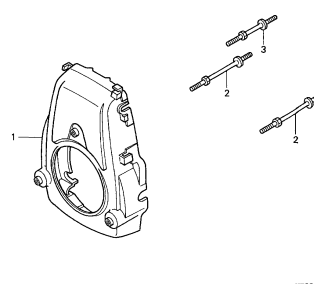
D 9



E-12

FAN COVER

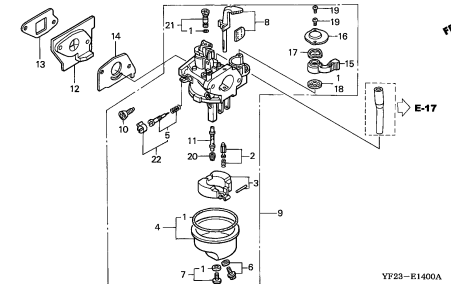
D10



E-14

CARBURETOR

D11



2

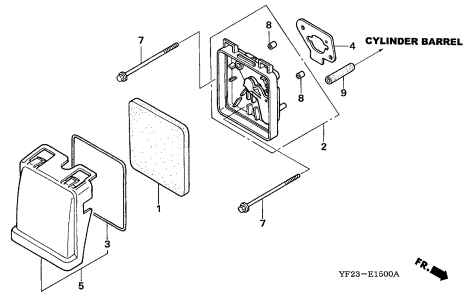
ENGINE GROUP

B16

E-15

AIR CLEANER

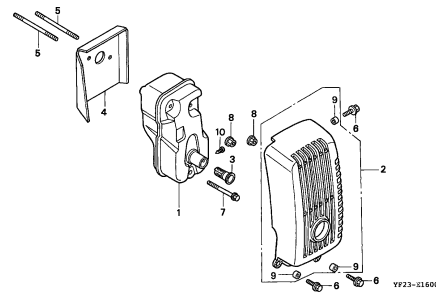
D13



E-16

MUFFLER

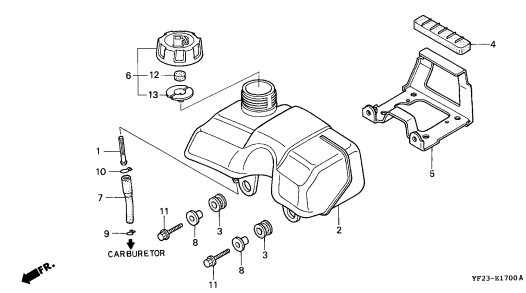
D14



E-17

FUEL TANK

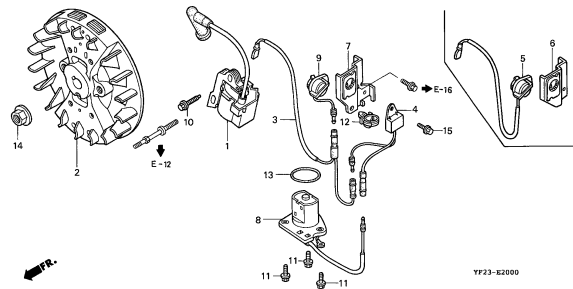
D15



E-20

FLYWHEEL/IGNITION COIL

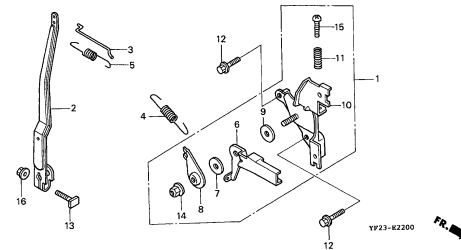
D16



E-22

CONTROL

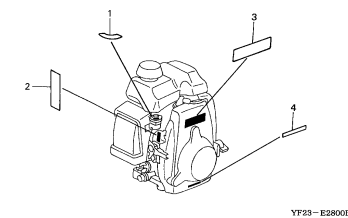
E 1



E-28

LABEL

E 2



2

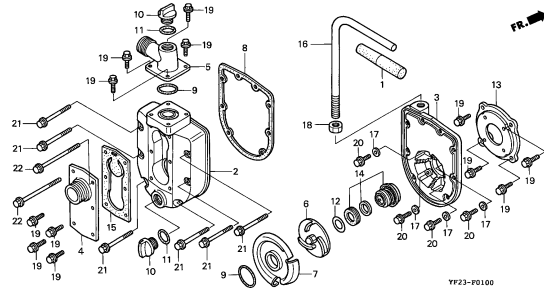
FRAME GROUP

C 1

F-1

CASING

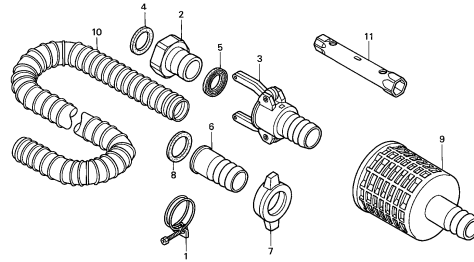
F 1



F-2

HOSE COUPLING

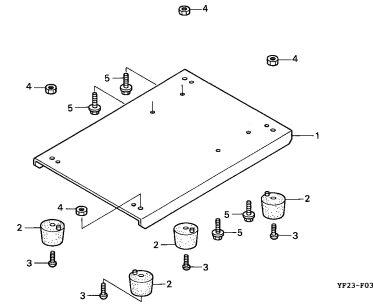
F 2



F-3

FRAME

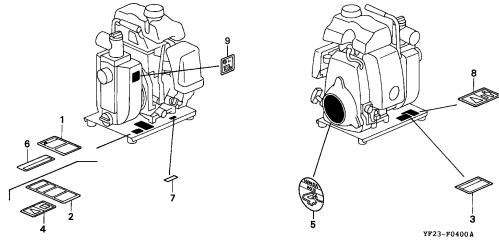
F 3



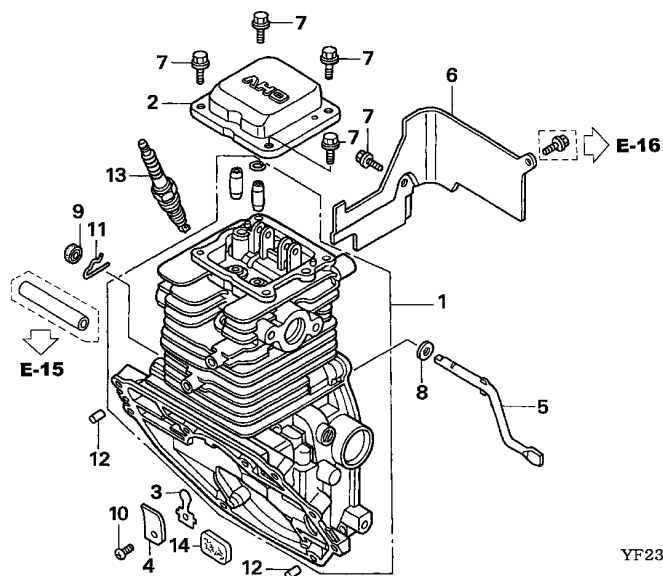
F-4

LABEL

F 4



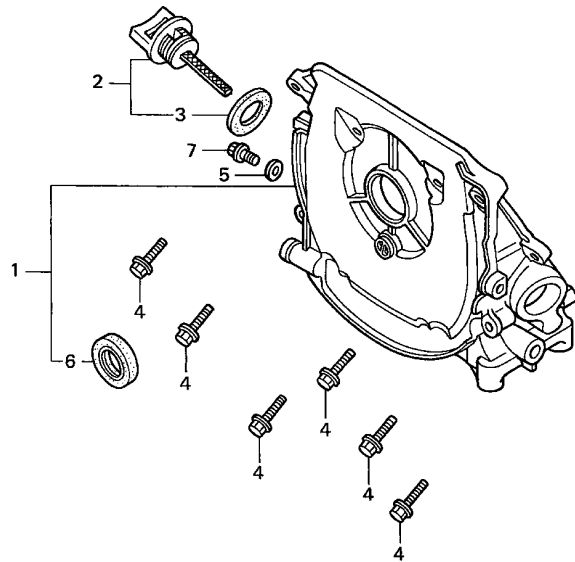
3



YF23-E0300A

Ref. No.	L.O.N.	(Relative ref. Number) Description	F.R.T.
1	1101A0	BARREL, CYLINDERINCLUDES: Engine removal and installation	1.8
2	1111D5	COVER, CYLINDER HEAD AND/OR PACKING, HEAD COVER (4)	0.2
3	1171A8	VALVE, OIL OUTLET	0.7
5	1161B4	SHAFT, GOVERNOR ARMINCLUDES: Engine removal and installation	1.4
6	4141E3	SHROUD, ENGINE	0.2
9	1101C4	OIL SEAL, GOVERNOR ARM SHAFTINCLUDES: Engine removal and installation	1.4
13	6141C1	PLUG, SPARKINCLUDES: Spark plug check	0.1

Ref. No.	Part No.	Description	Reqd. QTY	Serial No.	Parts catalogue code
1	12100-ZM7-000	BARREL COMP., CYLINDER	1	-----	CX1,DX2,DX3,D1,D3,EX1,EX3,E1,E3,U1,U3
	12100-ZM7-407	1	1374067	CX1/A,DX2/A,DX3/A,D1/A,D3/A,EX1/A,EX3/A,E1/A,E3/A,U1/A
	12100-ZM7-417	1	1374068	CX1/B,DX2/B,DX3/B,D1/B,D3/B,EX1/B,EX3/B,E1/B,E3/B,U1/B
2	12311-ZM7-000	COVER, HEAD	1	-----	CX1,DX2,DX3,D1,D3,EX1,EX3,E1,E3,U1,U3
	12311-ZM7-010	1	-----	CX1/A,CX1/B,DX2/A,DX2/B,DX3/A,DX3/B,D1/A,D1/B,D3/A,D3/B,EX1/A,EX1/B,EX3/A,EX3/B,E1/A,E1/B,E3/A,E3/B,U1/A,U1/B
3	15571-ZM7-003	VALVE, OIL OUTLET	1	-----	
4	15572-ZM7-000	PLATE, STOPPER	1	-----	
5	16541-ZM7-000	SHAFT, GOVERNOR ARM	1	-----	
6	19631-ZM7-000	SHROUD	1	-----	
7	90003-892-000	BOLT, FLANGE, 5X12	5	-----	
8	90443-ZC3-000	WASHER, 5.2X9	1	-----	
9	91231-ZC3-003	OIL SEAL, 5X11X5	1	-----	
10	93500-03005-0A	SCREW, PAN, 3X5	1	-----	
11	94251-06000	PIN, LOCK, 6MM	1	-----	
12	96220-60150	ROLLER, 6X15	2	-----	
13	98056-55757	PLUG, SPARK (U16FSR-UB)	1	-----	
	98056-55777	PLUG, SPARK (CR5HSB)	1	-----	
	98056-54757	PLUG, SPARK (U14FSR-UB)	(1)	-----	
	98056-54777	PLUG, SPARK (CR4HSB)	(1)	-----	
14	12367-ZE6-010	FILTER, BREATHER	1	1562768	----- CX1/B,DX2/B,DX3/B,D1/B,D3/B,EX1/B,EX3/B,E1/B,E3/B,U1/B



Ref. No.	L.O.N.	(Relative ref. Number) Description	F.R.T.
1	1101K5	CASE, OIL	0.9
6	1101E4	OIL SEAL, CRANKSHAFT :FRONT ..	0.9

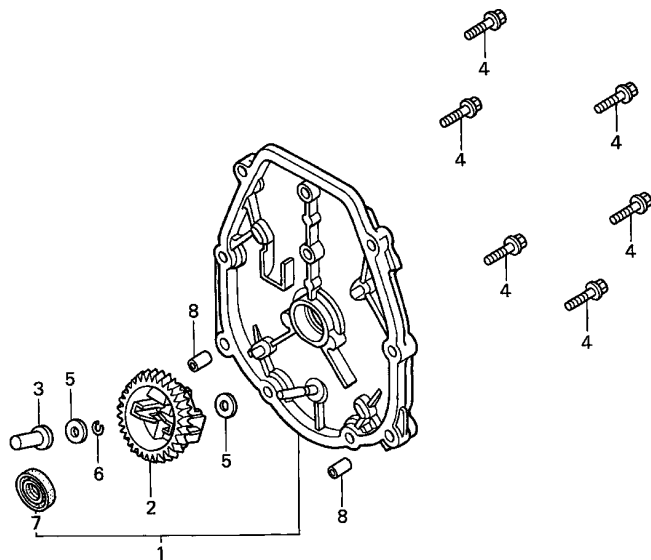
Ref. No.	Part No.	Description	Reqd. QTY	Serial No.	Parts catalogue code
			WX 15		
1	11300-ZM7-000	CASE ASSY., OIL	1	-----	D1,D3,E1,E3,U1,U3
	11300-ZM7-800	1	-----	CX1,DX2,DX3,EX1,EX3
	11300-ZM7-406	1	-----	D1/A,D1/B,D3/A,D3/B,E1/A,E1/B,E3/A,E3/B,U1/A,U1/B
	11300-ZM7-407	1	-----	CX1/A,CX1/B,DX2/A,DX2/B,DX3/A,DX3/B,EX1/A,EX1/B,EX3/A,EX3/B
2	15600-ZM7-003	CAP ASSY., OIL FILLER	1		
3	15625-ZE1-003	PACKING, OIL FILLER CAP	1		
4	90006-ZM7-000	BOLT, FLANGE, 5X23	8		
5	90471-580-000	PACKING, 8MM	1		
6	91202-HC5-003	OIL SEAL, 17X27X5 (ARAI)	1		
7	95701-08012-08	BOLT, FLANGE, 8X12	1		



E-6

CRANKCASE COVER

D 3



Ref. No.	L.O.N.	(Relative ref. Number) Description	F.R.T.
1	1101F1	COVER, CRANKCASE	0.4
2	1161C4	GOVERNOR ASSEMBLY	0.4
3	1161B6	SLIDER, GOVERNOR	0.3
7	1101E5	OIL SEAL, CRANKSHAFT :REAR ...	0.3

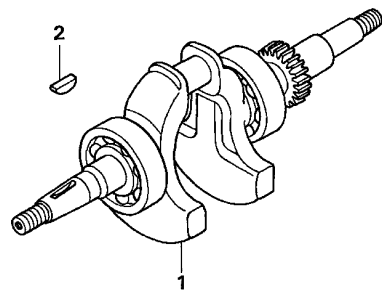
Ref. No.	Part No.	Description	Reqd. QTY	Serial No.	Parts catalogue code
1	11340-ZM7-010	COVER COMP., CRANKCASE SIDE	1	-----	1199157 CX1,DX2,DX3,D1,D3,EX1,EX3,E1,E3,U1,U3
	11340-ZM7-020	1	-----	CX1/A,CX1/B,DX2/A,DX2/B,DX3/A,DX3/B,D1/A,D1/B,D3/A,D3/B,EX1/A,EX1/B,EX3/A
				1199158	----- CX1,DX2,DX3,D1,D3,EX1,EX3,E1,E3,U1,U3
2	16510-ZM7-000	GOVERNOR ASSY.	1		
3	16531-ZM7-000	SLIDER, GOVERNOR	1		
4	90006-ZM7-000	BOLT, FLANGE, 5X23	6		
5	90441-ZM7-000	WASHER, 4.2X13	2		
6	90602-ZM7-000	CLIP, GOVERNOR HOLDER	1		
7	91202-HC5-003	OIL SEAL, 17X27X5 (ARAI)	1		
8	94301-06100	DOWEL PIN, 6X10	2		

2

E-7

CRANKSHAFT

D 4



← IFR.

YF23-E0700A

Ref. No.	L.O.N.	(Relative ref. Number) Description	F.R.T.
1	1101F0	CRANKSHAFT INCLUDES: Engine removal and installation	1.4

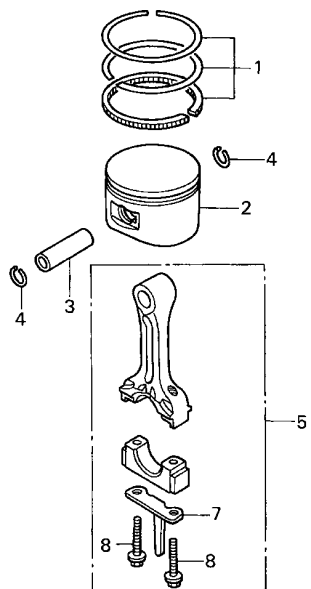
Ref. No.	Part No.	Description	Reqd. QTY	Serial No.	Parts catalogue code
			WX 15		
1	13310-ZM7-G00	CRANKSHAFT COMP.	1		
2	13331-ZM7-000	KEY, SPECIAL	1		

2

E-8

PISTON/CONNECTING ROD

D 5



YF23-E0800A

FR.

Ref. No.	L.O.N.	(Relative ref. Number) Description	F.R.T.
2	1111R1	(1,3,5) PISTON AND/OR RING SET AND/OR BEARING AND/OR RODINCLUDES: Engine removal and installation .INCLUDES: Inspection/Measurement/Cleaning	1.5

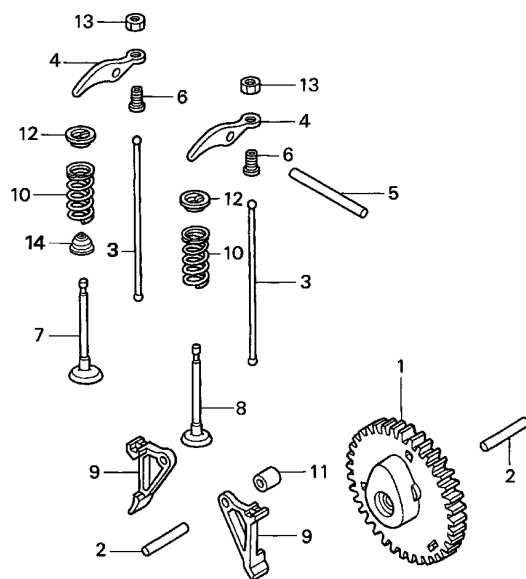
Ref. No.	Part No.	Description	Reqd. QTY	Serial No.	Parts catalogue code
			WX 15		
1	13010-ZM7-000	RING SET, PISTON (STD.)	1		
2	13101-ZM7-000	PISTON (STD.)	1	----- 1209631	CX1,DX2,DX3,D1,D3,EX1,EX3,E1,E3,U1,U3
	13101-ZM7-010	1	-----	CX1/A,CX1/B,DX2/A,DX2/B,DX3/A,DX3/B,D1/A,D1/B,D3/A,D3/B,EX1/A,EX1/B,EX3/A,EX3/B,E1/A,E1/B,E3/A,E3/B,U1/A,U1/B
3	13111-122-000	PIN, PISTON, 10X33	1	1209632	----- CX1,DX2,DX3,D1,D3,EX1,EX3,E1,E3,U1,U3
4	13115-147-000	CLIP, PISTON PIN, 10MM	2		
5	13200-ZM7-000	ROD ASSY., CONNECTING	1		
7	13281-ZM7-000	DIPPER, CONNECTING ROD	1		
8	90001-ZM7-000	BOLT, CONNECTING ROD	2		

2

E-9

CAMSHAFT

D 6

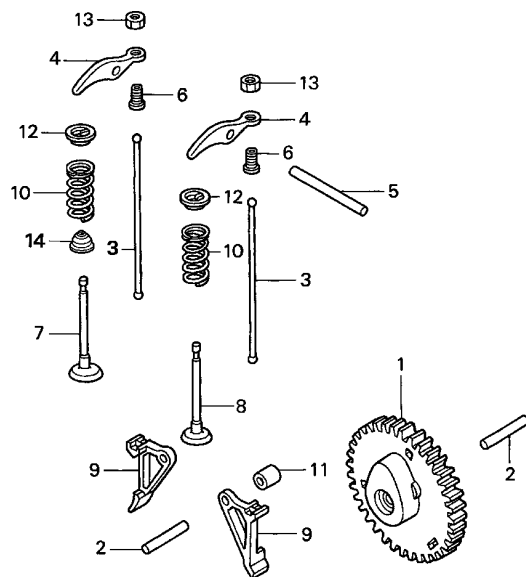


YF23-E0900A

Ref. No.	L.O.N.	(Relative ref. Number) Description	F.R.T.
1	1111C2	CAMSHAFTINCLUDES: Valve clearance adjustment	0.5
3	1111L6	ROD, PUSH :INTAKEINCLUDES: Valve clearance adjustment	0.5
	1111L6A	.Replace exhaust push rod add	0.1
	1111L7	ROD, PUSH :EXHAUSTINCLUDES: Valve clearance adjustment	0.5
	1111L7A	.Replace intake push rod add	0.1
4	1111A2	ARM, ROCKER :INTAKEINCLUDES: Valve clearance adjustment	0.4
	1111A2A	.Replace exhaust rocker arm add	0.1
	1111A1	ARM, ROCKER :EXHAUSTINCLUDES: Valve clearance adjustment	0.4
	1111A1A	.Replace intake rocker arm add	0.1
7	1111L1	VALVE, INTAKEINCLUDES: Engine removal and installation .INCLUDES: Valve clearance adjustment and reface	1.6

Ref. No.	Part No.	Description	Reqd. QTY	Serial No.	Parts catalogue code
			WX 15		
1	14100-ZM7-000	CAMSHAFT ASSY.	1	1023740	CX1,DX2,DX3,D1,D3,EX1,EX3,E1,E3,U1,U3
	14100-ZM7-010	1	1023741	CX1/A,CX1/B,DX2/A,DX2/B,DX3/A,DX3/B,D1/A,D1/B,D3/A,D3/B,EX1/A,EX1/B,EX3/A,EX3/B,E1/A,E1/B,E3/A,E3/B,U1/A,U1/B
2	90702-P6R-008	PIN, OIL PUMP	2	1199157	CX1,DX2,DX3,D1,D3,EX1,EX3,E1,E3,U1,U3
	14126-Z0G-003	ROLLER (5X29.8)	2	1199158	CX1/A,CX1/B,DX2/A,DX2/B,DX3/A,DX3/B,D1/A,D1/B,D3/A,D3/B,EX1/A,EX1/B,EX3/A,EX3/B,E1/A,E1/B,E3/A,E3/B,U1/A,U1/B
3	14410-ZM7-000	ROD, PUSH	2		CX1,DX2,DX3,D1,D3,EX1,EX3,E1,E3,U1,U3
4	14431-ZM7-000	ARM, VALVE ROCKER	2		
5	14435-ZM7-003	ROLLER (4X37.8)	1		
6	14451-ZM7-000	PIVOT, ROCKER ARM	2		
7	14711-ZM7-000	VALVE, IN.	1		
8	14721-ZM7-000	VALVE, EX.	1		
9	14731-ZM7-003	LIFTER, VALVE	2	1029411	CX1,DX2,DX3,D1,D3,EX1,EX3,E1,E3,U1,U3
	14731-ZM7-013	2	1029412	CX1/A,CX1/B,DX2/A,DX2/B,DX3/A,DX3/B,D1/A,D1/B,D3/A,D3/B,EX1/A,EX1/B,EX3/A,EX3/B,E1/A,E1/B,E3/A,E3/B,U1/A,U1/B
10	14751-ZM7-000	SPRING, VALVE	2		CX1,DX2,DX3,D1,D3,EX1,EX3,E1,E3,U1,U3
11	14754-ZM7-000	COLLAR, LIFTER	1		
12	14771-ZM3-000	RETAINER, VALVE SPRING	2	1017842	CX1,DX2,DX3,D1,D3,EX1,EX3,E1,E3,U1,U3
	14771-ZM3-010	2		CX1/A,CX1/B,DX2/A,DX2/B,DX3/A,DX3/B,D1/A,D1/B,D3/A,D3/B,EX1/A,EX1/B,EX3/A,EX3/B,E1/A,E1/B,E3/A,E3/B,U1/A,U1/B
13	90206-KM3-000	NUT, TAPPET ADJUSTING	2	1017843	CX1,DX2,DX3,D1,D3,EX1,EX3,E1,E3,U1,U3
14	12209-ZM7-003	SEAL, VALVE STEM	1	1562768	CX1/B,DX2/B,DX3/B,D1/B,D3/B,EX1/B,EX3/B,E1/B,E3/B,U1/B

2

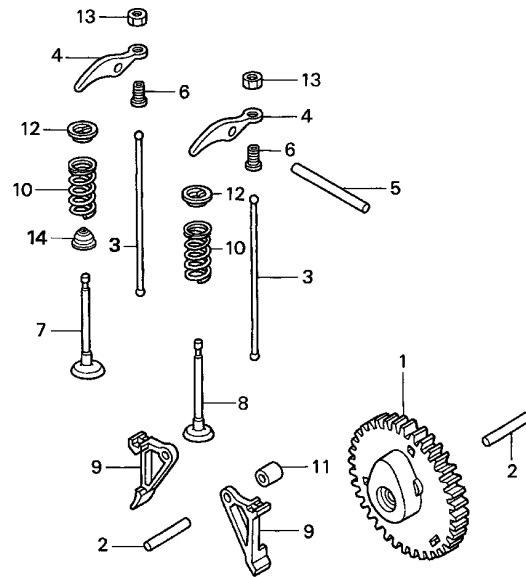


YF23-E0900A

Ref. No.	L.O.N.	(Relative ref. Number) Description	F.R.T.
+ 7	1111L1E	.Replace intake and exhaust all add	0.1
8	1111L0	VALVE, EXHAUST	1.6
		.INCLUDES: Engine removal and installation .INCLUDES: Valve clearance adjustment and reface	
	1111L0E	.Replace intake and exhaust all add	0.1
9	1111L9	LIFTER, VALVE :INTAKE	0.5
		.NOTE: Same time for two units	
	1111M0	LIFTER, VALVE :EXHAUST	0.5
		.NOTE: Same time for two units	
10	1111P3	SPRING, VALVE :INTAKE	0.5
		.INCLUDES: Valve clearance adjustment	
	1111P3A	.Replace intake and exhaust all add	0.1
	1111P4	SPRING, VALVE :EXHAUST	0.5
		.INCLUDES: Valve clearance adjustment	
	1111P4A	.Replace intake and exhaust all add	0.1
+14	1111K2	SEAL, INTAKE VALVE STEM	1.5

2

FR.



FR.

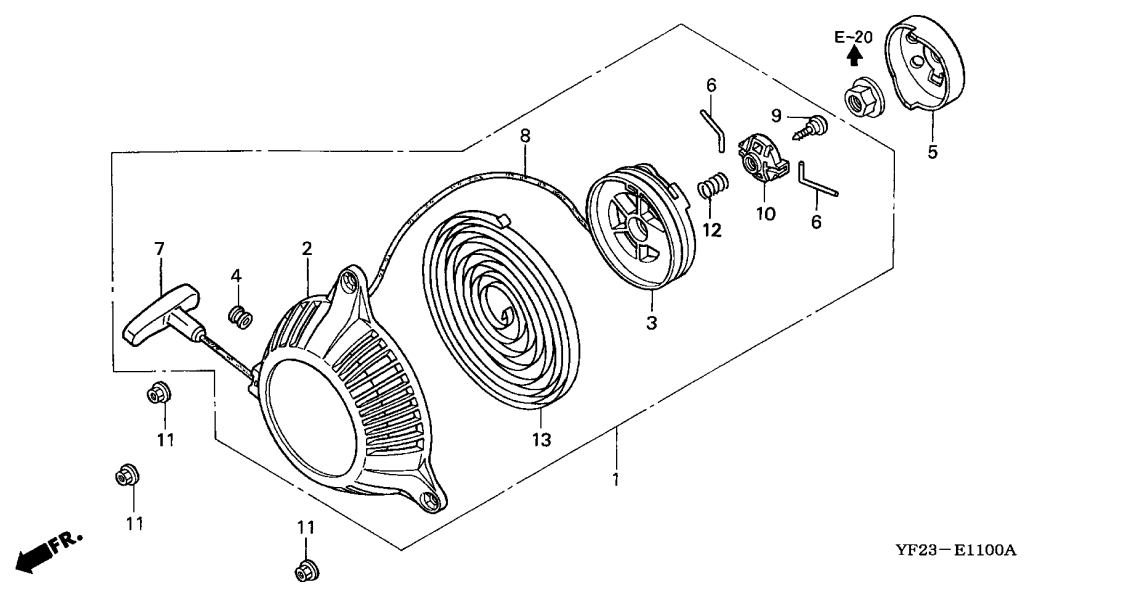
YF23-E0900A

Ref. No.	L.O.N. (Relative ref. Number)	Description	F.R.T.
+14		.INCLUDES: Engine removal and installation .INCLUDES: Valve clearance adjustment	

E-11

RECOIL STARTER

D 9



Ref. No.	L.O.N.	(Relative ref. Number) Description	F.R.T.
1	1121B9	STARTER, RECOIL	0.1
3	1121B1	REEL, RECOIL STARTER	0.3
5	1121A9	PULLEY, RECOIL STARTER	0.2
8	1121B3	ROPE, RECOIL STARTER	0.3
13	1121B7	SPRING, RECOIL STARTER RETURN	0.3

YF23-E1100A

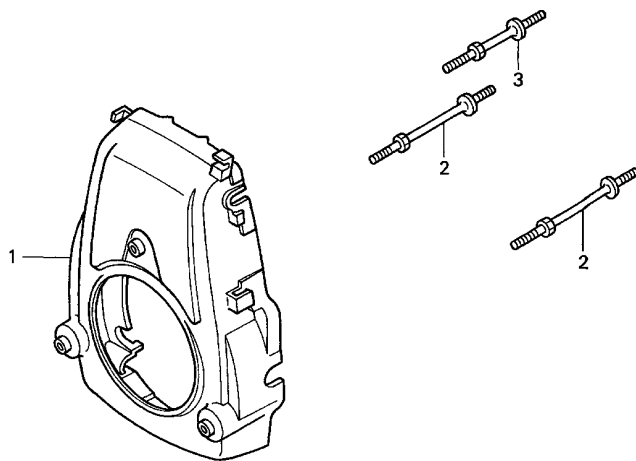
Ref. No.	Part No.	Description	Reqd. QTY	Serial No.	Parts catalogue code
			WX 15		
1	28400-ZM7-003	STARTER ASSY., RECOIL	1		
2	28414-ZM7-003	CASE, RECOIL STARTER	1		
3	28421-ZM7-003	REEL, RECOIL STARTER	1		
4	28433-ZM3-003	GUIDE, ROPE	1		
5	28451-ZM7-003	PULLEY, RECOIL STARTER	1		
6	28459-ZM7-003	ARM, SWING	2		
7	28461-ZM3-003	KNOB, RECOIL STARTER	1		
8	28462-ZM7-003	ROPE, RECOIL STARTER	1		
9	90012-ZM3-003	SCREW, SETTING	1		
10	91504-ZM7-003	COLLAR	1		
11	94050-05000	NUT, FLANGE, 5MM	3		
12	28404-968-004	SPRING, FRICTION	1		
13	28442-ZL8-003	SPRING, RECOIL STARTER	1		

2

E-12

FAN COVER

D10



Ref. No.	L.O.N.	(Relative ref. Number) Description	F.R.T.
----------	--------	------------------------------------	--------

1	114168	COVER, ENGINE COOLING FAN	0.2
---	--------	--------------------------------	-----

FR.

YF23-E1200

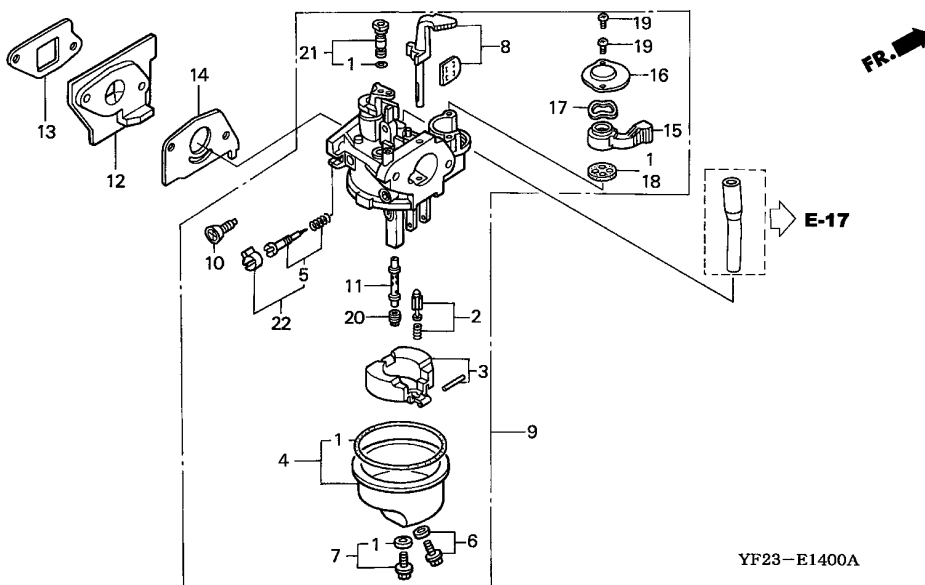
Ref. No.	Part No.	Description	Reqd. QTY	Serial No.	Parts catalogue code
			WX 15		
1	19610-ZM7-000ZA	COVER COMP., FAN	1	-----	----- CX1,DX2,DX3,D1,D3,EX1,EX3,E1,E3,U1,U3
		R8.....BRIGHT RED	1	-----	1355560 CX1/A,DX2/A,DX3/A,D1/A,D3/A,EX1/A,EX3/A,E1/A,E3/A,U1/A
	19610-ZM7-000ZC	*R280*.....POWER RED	1	-----	----- CX1/B,DX2/B,DX3/B,D1/B,D3/B,EX1/B,EX3/B,E1/B,E3/B,U1/B
			1	1355561	----- CX1/A,DX2/A,DX3/A,D1/A,D3/A,EX1/A,EX3/A,E1/A,E3/A,U1/A
2	90042-ZM7-000	BOLT, STUD (A)	2		
3	90043-ZM7-000	BOLT, STUD (B)	1		

2

E-14

CARBURETOR

D11



YF23-E1400A

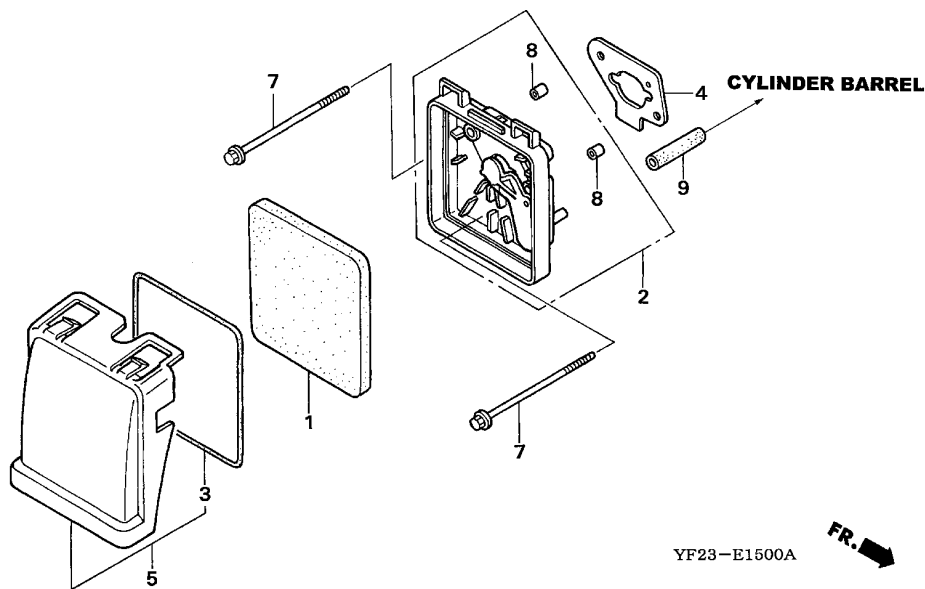
Ref. No.	L.O.N.	(Relative ref. Number) Description	F.R.T.
1	3111B1	GASKET SET, CARBURETOR (3)	0.4
2	3111E1	VALVE SET, FLOAT AND/OR FLOAT SET (22)	0.3
5	3111D7	SCREW SET, PILOT	0.2
8	8101C5	CHOKE SET, CARBURETOR	0.2
9	3111F3	CARBURETOR (13)	0.2
12	3111C0	INSULATOR, CARBURETOR AND/OR PACKING, INSULATOR	0.2
14	3111C8	PACKING, CARBURETOR	0.2
18	3101C5	PACKING, FUEL COCK	0.2
20	3111C3	JET, MAIN	0.3

Ref. No.	Part No.	Description	Reqd. QTY	Serial No.	Parts catalogue code
			WX 15		
1	16010-ZG0-015	GASKET SET	1		
2	16011-ZE0-005	VALVE SET, FLOAT	1		
3	16013-ZG0-811	FLOAT SET	1		
4	16015-ZG0-811	CHAMBER SET, FLOAT	1		
5	16016-ZE0-005	SCREW SET, PILOT (CARBURETOR NO.)	1	BF32D	A CX1,DX2,DX3,D1,D3,EX1,EX3,E1,E3,U1,U3
6	16024-ZE1-811	SCREW SET, DRAIN	1		
7	16028-ZG0-811	SCREW SET	1		
8	16044-ZM7-003	CHOKE SET (CARBURETOR NO.)	1	BF32E	D CX1/B,DX2/B,DX3/B,D1/B,D3/B,EX1/B,EX3/B,E1/B,E3/B,U1/B
	16044-ZM7-801	(CARBURETOR NO.)	1	BF32E	E CX1/B,DX2/B,DX3/B,D1/B,D3/B,EX1/B,EX3/B,E1/B,E3/B,U1/B
9	16100-ZM7-G01	CARBURETOR ASSY. (BF32D A)	1	1039488	CX1,DX2,DX3,D1,D3,EX1,EX3,E1,E3,U1,U3
	16100-ZM7-G11	CARBURETOR ASSY. (BF32E A)	1	1039489	1068857 CX1,DX2,DX3,D1,D3,EX1,EX3,E1,E3,U1,U3
	16100-ZM7-G13	CARBURETOR ASSY. (BF32E C)	1	1068858	1535925 CX1/A,DX2/A,DX3/A,D1/A,D3/A,EX1/A,EX3/A,E1/A,E3/A,U1/A
	16100-ZM7-G14	CARBURETOR ASSY. (BF32E D)	1	1535926	1562767 CX1/B,DX2/B,DX3/B,D1/B,D3/B,EX1/B,EX3/B,E1/B,E3/B,U1/B
	16100-ZM7-G15	CARBURETOR ASSY. (BF32E E)	1	1562768	CX1/B,DX2/B,DX3/B,D1/B,D3/B,EX1/B,EX3/B,E1/B,E3/B,U1/B
10	16124-ZE0-005	SCREW, THROTTLE STOP	1		
11	16166-ZM7-003	NOZZLE, MAIN (CARBURETOR NO.)	1	BF32E	C CX1/B,DX2/B,DX3/B,D1/B,D3/B,EX1/B,EX3/B,E1/B,E3/B,U1/B
	16166-ZM7-801	(CARBURETOR NO.)	1	BF32E	D BF32E D CX1/B,DX2/B,DX3/B,D1/B,D3/B,EX1/B,EX3/B,E1/B,E3/B,U1/B

2

Ref. No.	Part No.	Description	Reqd. QTY		Serial No.	Parts catalogue code
			wx	15		
11)	16166-ZN4-801	NOZZLE, MAIN	1			
		(CARBURETOR NO.)	1		BF32E E	CX1/B,DX2/B,DX3/B,D1/B,D3/B,EX1/B,EX3/B,E1/B,E3/B,U1/B
12	16211-ZM7-000	INSULATOR, CARBURETOR	1			
13	16212-ZM7-000	PACKING, INSULATOR	1			
14	16221-ZG0-801	PACKING, CARBURETOR	1			
15	16953-ZG0-812	LEVER, COCK	1			
16	16954-ZE1-812	PLATE, LEVER SETTING	1			
17	16956-ZE1-811	SPRING, COCK LEVER	1			
18	16957-ZE1-812	PACKING, FUEL COCK	1			
19	93500-03006-1H	SCREW, PAN, 3X6	2			
20	99101-ZG0-0550	JET, MAIN, #55	1			CX1, CX1/A, DX2, DX2/A, DX3, DX3/A, D1, D1/A, D3, D3/A, EX1, EX1/A, EX3, EX3/A, E1, E1/A, E3, E3/A, U1, U1/A, U3
		(CARBURETOR NO.)	1		BF32E C	CX1/B,DX2/B,DX3/B,D1/B,D3/B,EX1/B,EX3/B,E1/B,E3/B,U1/B
	99101-ZG0-0500	JET, MAIN, #50	(1)			
	99101-ZG0-0520	JET, MAIN, #52	(1)			CX1, CX1/A, DX2, DX2/A, DX3, DX3/A, D1, D1/A, D3, D3/A, EX1, EX1/A, EX3, EX3/A, E1, E1/A, E3, E3/A, U1, U1/A, U3
		(CARBURETOR NO.)	(1)		BF32E C	CX1/B,DX2/B,DX3/B,D1/B,D3/B,EX1/B,EX3/B,E1/B,E3/B,U1/B
	99101-ZG0-0480	JET, MAIN, #48	(1)		BF32E D	CX1/B,DX2/B,DX3/B,D1/B,D3/B,EX1/B,EX3/B,E1/B,E3/B,U1/B
		(CARBURETOR NO.)	(1)			
	99101-ZG0-0520	JET, MAIN, #52	1		BF32E D	CX1/B,DX2/B,DX3/B,D1/B,D3/B,EX1/B,EX3/B,E1/B,E3/B,U1/B
		(CARBURETOR NO.)	(1)			CX1, CX1/A, DX2, DX2/A, DX3, DX3/A, D1, D1/A, D3, D3/A, EX1, EX1/A, EX3, EX3/A, E1, E1/A, E3, E3/A, U1, U1/A, U3
21	99204-ZE2-0350	JET SET, PILOT, #35	1			
22	16016-ZH7-W01	SCREW SET, PILOT	1			
		(CARBURETOR NO.)	1		BF32E A	CX1, DX2, DX3, D1, D3, EX1, EX3, E1, E3, U1, U3
			1		BF32E C	CX1/B,DX2/B,DX3/B,D1/B,D3/B,EX1/B,EX3/B,E1/B,E3/B,U1/B
	16016-ZH8-W01	SCREW SET	1		BF32E D	BF32E D CX1/B,DX2/B,DX3/B,D1/B,D3/B,EX1/B,EX3/B,E1/B,E3/B,U1/B
		(CARBURETOR NO.)	1			
	16016-ZH7-W01	SCREW SET, PILOT	1		BF32E E	CX1/B,DX2/B,DX3/B,D1/B,D3/B,EX1/B,EX3/B,E1/B,E3/B,U1/B
		(CARBURETOR NO.)	1			

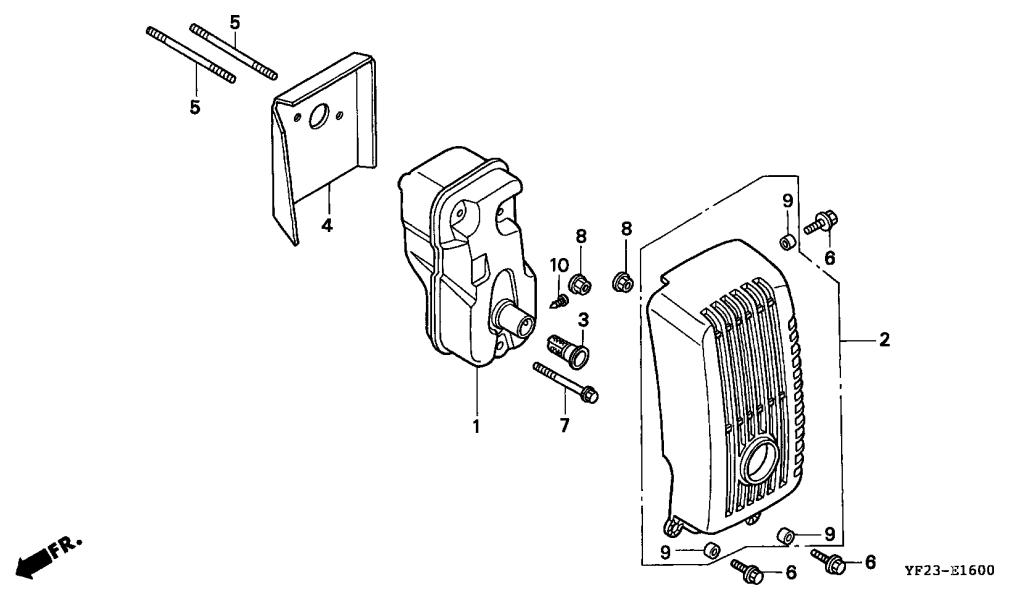




Ref. No.	L.O.N.	(Relative ref. Number) Description	F.R.T.
1	3121B8	ELEMENT, AIR CLEANER	0.1
2	3121A5	CASE, AIR CLEANER	0.1
3	3121E9	SEAL, AIR CLEANER COVER	0.1
4	3121D9	PACKING, AIR CLEANER	0.1
9	1111K5	TUBE, BREATHER	0.1

Ref. No.	Part No.	Description	Reqd. QTY	Serial No.	Parts catalogue code
			WX 15		
1	17211-ZM7-000	ELEMENT, AIR CLEANER	1		
2	17220-ZM7-000	CASE COMP., AIR CLEANER	1		
3	17227-ZM7-000	SEAL, AIR CLEANER	1		
4	17228-ZM7-000	PACKING, AIR CLEANER	1		
5	17230-ZM7-000	COVER COMP., AIR CLEANER	1		
7	90004-ZM7-000	BOLT, FLANGE, 5X75	2		
8	91503-ZM7-000	COLLAR, AIR CLEANER	2		
9	95005-70075-30	TUBE, 7X75(95005-70001-30M)	1		

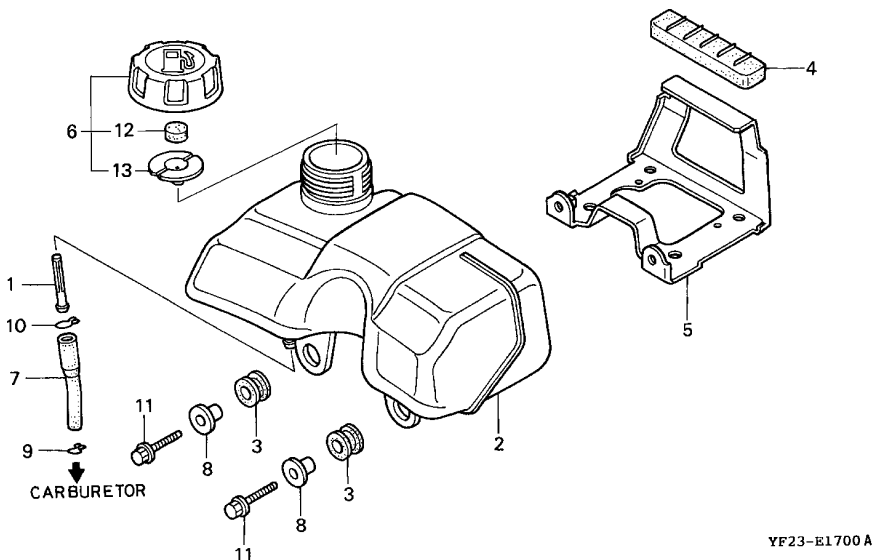
2



Ref. No.	L.O.N.	(Relative ref. Number) Description	F.R.T.
1	3131C5	MUFFLER, EXHAUST	0.2
2	3131D6	PROTECTOR, EXHAUST MUFFLER ...	0.1
4	3131B6	GUIDE, AIR EXHAUST	0.2

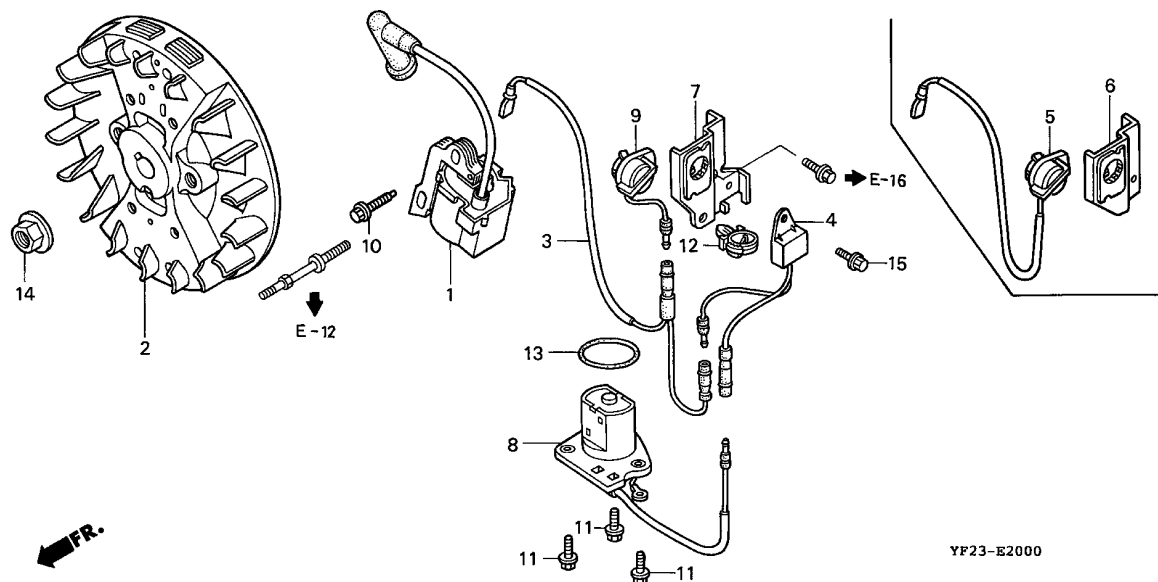
Ref. No.	Part No.	Description	Reqd. QTY	Serial No.	Parts catalogue code
			WX 15		
1	18310-ZM7-003	MUFFLER COMP.	1		
	18310-ZM7-801	(1)		
2	18320-ZM7-000	PROTECTOR COMP., MUFFLER	1		
3	18350-ZM7-801	ARRESTER COMP., SPARK	(1)		
4	18515-ZM7-000	GUIDE, AIR	1		
5	90002-ZM7-000	BOLT, STUD, 2,5X55	2		
6	90012-892-000	BOLT, FLANGE, 5X16	3		
7	90103-P4V-010	BOLT, FLANGE, 5X35	1		
8	90136-SM4-901	NUT, SELF-LOCK, 5MM	2		
9	91502-ZM3-000	COLLAR, TOP COVER	3		
10	93903-24110	SCREW, TAPPING, 4X8	(1)		





Ref. No.	L.O.N.	(Relative ref. Number) Description	F.R.T.
1	3101H8	STRAINER, FUEL	0.1
2	3101H7	TANK, FUEL	0.1
3	3101M3	RUBBER A, TANK MOUNTING	0.1
.NOTE: Same time for two units			
4	3101M0	RUBBER B, TANK MOUNTING	0.1
5	3101E0	STAY, FUEL TANK	0.1
7	3101F1	TUBE, FUEL TANK	0.1

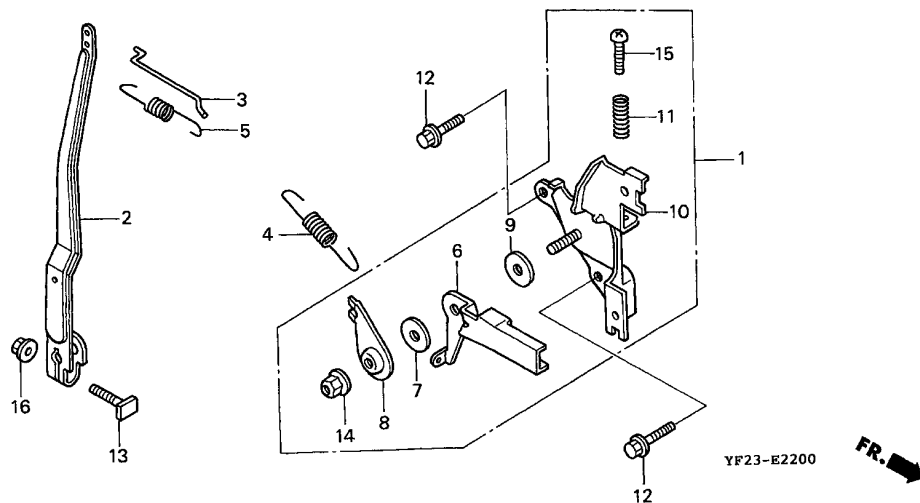
Ref. No.	Part No.	Description	Reqd. QTY	Serial No.	Parts catalogue code
			WX 15		
1	16952-ZE6-000	STRAINER, FUEL	1		
2	17511-ZM7-000	TANK, FUEL	1		
3	17532-ZM7-000	RUBBER A, TANK MOUNTING	2		
4	17533-ZM7-000	RUBBER B, TANK MOUNTING	1		
5	17560-ZM7-000	STAY COMP., FUEL TANK	1		
6	17620-ZL8-003	CAP ASSY., FUEL TANK	1	1159947	CX1,DX2,DX3,D1,D3,EX1,EX3,E1,E3,U1,U3
	17620-ZL8-013	1	1159948	CX1/A,CX1/B,DX2/A,DX2/B,DX3/A,DX3/B,D1/A,D1/B,D3/A,D3/B,EX1/A,EX1/B,EX3/A,EX3/B,E1/A,E1/B,E3/A,E3/B,U1/A,U1/B
7	17701-ZM7-000	TUBE A, FUEL	1		CX1,DX2,DX3,D1,D3,EX1,EX3,E1,E3,U1,U3
8	19052-MB4-880	COLLAR, CANISTER MOUNTING ...	2		
9	95002-02080	CLIP, TUBE (B8)	1		
10	95002-02120	CLIP, TUBE (B12)	1		
	95002-02100	CLIP, TUBE (B10)	1	1345038	CX1/A,DX2/A,DX3/A,D1/A,D3/A,EX1/A,EX3/A,E1/A,E3/A,U1/A
			1	1345039	CX1/B,DX2/B,DX3/B,D1/B,D3/B,EX1/B,EX3/B,E1/B,E3/B,U1/B
			1		CX1/A,DX2/A,DX3/A,D1/A,D3/A,EX1/A,EX3/A,E1/A,E3/A,U1/A
11	95701-06020-07	BOLT, FLANGE, 6X20	2		
12	17622-ZL8-003	SPONGE, FUEL CAP BREATHER ...	1		
13	17624-ZL8-003	PACKING, FUEL CAP	1		



Ref. No.	L.O.N.	(Relative ref. Number) Description	F.R.T.
1	6141A5	COIL, IGNITION	0.2
2	2161B5	FLYWHEEL	0.3
3	6111B3	CORD, STOP SWITCH	0.1
4	6151A0	ALERT UNIT, OIL	0.1
5	6151D9	SWITCH, ENGINE STOP	0.1
8	6151E8	SWITCH, OIL LEVEL	0.2

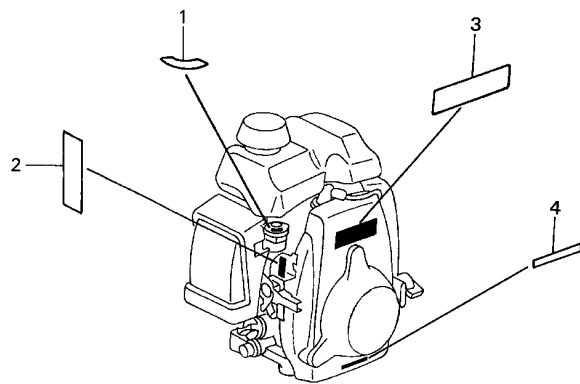
Ref. No.	Part No.	Description	Reqd. QTY	Serial No.	Parts catalogue code
			WX 15		
1	30500-ZM7-004	COIL ASSY., IGNITION	1		
2	31110-ZM7-004	FLYWHEEL COMP.	1		
3	32195-ZM7-800	CORD, STOP SWITCH	1	-----	CX1, CX1/A, CX1/B, DX2, DX2/A, DX2/B, DX3, DX3/A, DX3/B, EX1, EX1/A, EX1/B, EX3, EX3/A, EX3/B
4	34150-ZH7-003	ALERT UNIT, OIL	1	-----	CX1, CX1/A, CX1/B, DX2, DX2/A, DX2/B, DX3, DX3/A, DX3/B, EX1, EX1/A, EX1/B, EX3, EX3/A, EX3/B
5	35120-ZM7-003	SWITCH ASSY., ENGINE STOP ...	1	-----	D1, D1/A, D1/B, D3, D3/A, D3/B, U1, U1/A, U1/B, U3
	35120-ZM7-801	1	-----	E1, E1/A, E1/B, E3, E3/A, E3/B
6	35124-ZM7-000	BRACKET COMP., STOP SWITCH ..	1	-----	D1, D1/A, D1/B, D3, D3/A, D3/B, E1, E1/A, E1/B, E3, E3/A, E3/B, U1, U1/A, U1/B, U3
7	35124-ZM7-800	BRACKET COMP., STOP SWITCH ..	1	-----	CX1, CX1/A, CX1/B, DX2, DX2/A, DX2/B, DX3, DX3/A, DX3/B, EX1, EX1/A, EX1/B, EX3, EX3/A, EX3/B
8	35480-ZM7-801	SWITCH ASSY., OIL LEVEL	1	-----	CX1, CX1/A, CX1/B, DX2, DX2/A, DX2/B, DX3, DX3/A, DX3/B, EX1, EX1/A, EX1/B, EX3, EX3/A, EX3/B
9	36100-ZE1-015	SWITCH ASSY., ENGINE STOP ...	1	-----	CX1, CX1/A, CX1/B, DX2, DX2/A, DX2/B, DX3, DX3/A, DX3/B
	36100-ZH8-W41	1	-----	EX1, EX1/A, EX1/B, EX3, EX3/A, EX3/B
10	90004-ZC3-000	BOLT, FLANGE, 5X20	1		
11	90012-896-750	BOLT, FLANGE, 5X14	3	-----	CX1, CX1/A, CX1/B, DX2, DX2/A, DX2/B, DX3, DX3/A, DX3/B, EX1, EX1/A, EX1/B, EX3, EX3/A, EX3/B
12	90684-ZA0-601	CLIP, HARNESS	1	-----	CX1, CX1/A, CX1/B, DX2, DX2/A, DX2/B, DX3, DX3/A, DX3/B, EX1, EX1/A, EX1/B, EX3, EX3/A, EX3/B
13	91301-ZA8-003	O-RING, 34.6X2.5	1	-----	CX1, DX2, DX3, EX1, EX3
	91301-ZM7-003	1	-----	CX1/A, CX1/B, DX2/A, DX2/B, DX3/A, DX3/B, EX1/A, EX1/B, EX3/A, EX3/B
14	94050-10000	NUT, FLANGE, 10MM	1		
15	95701-06008-00	BOLT, FLANGE, 6X8	1	-----	CX1, CX1/A, CX1/B, DX2, DX2/A, DX2/B, DX3, DX3/A, DX3/B, EX1, EX1/A, EX1/B, EX3, EX3/A, EX3/B





Ref. No.	L.O.N.	(Relative ref. Number) Description	F.R.T.
1	1161A5	CONTROL, THROTTLE/GOVERNOR ...	0.1
2	1161A0	ARM, GOVERNOR	0.2
3	1161B1	ROD, GOVERNOR	0.2
4	1161C5	SPRING, GOVERNOR	0.1
5	1161C2	SPRING, THROTTLE RETURN	0.2
6	1161A8	LEVER, CONTROL	0.2
10	1161A2	BASE, CONTROL	0.2

Ref. No.	Part No.	Description	Reqd. QTY	Serial No.	Parts catalogue code
			WX 15		
1	16500-ZM7-000	CONTROL ASSY.	1		
2	16551-ZM7-000	ARM, GOVERNOR	1		
3	16555-ZM7-000	ROD, GOVERNOR	1		
4	16561-ZM7-000	SPRING, GOVERNOR	1		
5	16562-ZM7-000	SPRING, THROTTLE RETURN	1		
6	16571-ZM7-000	LEVER, CONTROL	1		
7	16574-ZE1-000	SPRING, LEVER	1		
8	16575-ZH8-000	WASHER, CONTROL LEVER	1		
9	16578-ZE1-000	SPACER, CONTROL LEVER	1		
10	16580-ZM7-000	BASE COMP., CONTROL	1		
11	16584-ZE3-790	SPRING, CONTROL ADJUSTING ...	1		
12	90003-892-000	BOLT, FLANGE, 5X12	2		
13	90015-ZE5-010	BOLT, GOVERNOR ARM	1		
14	90114-SA0-000	NUT, SELF-LOCK, 6MM	1		
15	93500-05020-0A	SCREW, PAN, 5X20	1		
16	94050-06000	NUT, FLANGE, 6MM	1		



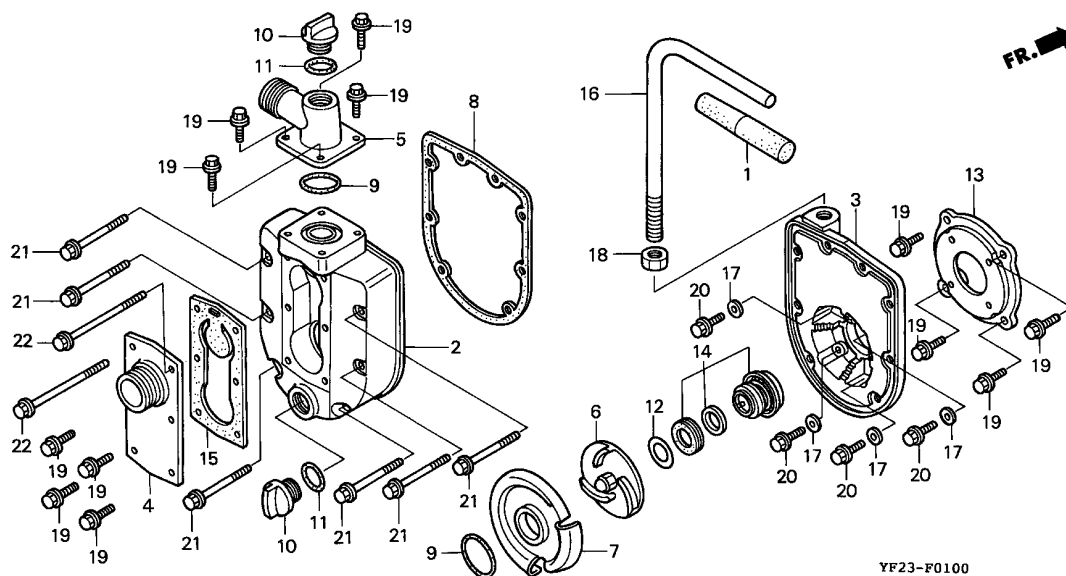
YF23-E2800B

Ref. No.	L.O.N.	(Relative ref. Number)	F.R.T.
		Description	

NO INFORMATION

Ref. No.	Part No.	Description	Reqd. QTY	Serial No.	Parts catalogue code
			WX 15		
1	87528-ZG0-W40	MARK, COCK (EXTERNAL)	1		
2	87532-ZM3-G00	MARK, THROTTLE INDICATION ...	1		
3	87135-ZE2-010	LABEL, E-SPEC (EPA STANDARD) ...	1	1158378	----- CX1,DX2,DX3,D1,D3,EX1,EX3,E1,E3,U1,U3
	87135-ZE2-020	LABEL, E-SPEC (15.5X27.5) ...	1	-----	----- CX1/A,DX2/A,DX2/B,DX3/A,DX3/B,D1/A,D1/B,D3/A,D3/B,EX1/A,EX3/A,E1/A,E3/A U1/A,U1/B
4	87637-ZM3-800	MARK (C-TICK)	1	1562767	----- CX1/B,EX1/B,EX3/B,E1/B,E3/B U1/B





Ref. No.	L.O.N.	(Relative ref. Number) Description	F.R.T.
2	2151G6	CASING, WATER PUMP	0.2
3	2151M5	PLATE, WATER PUMP CASING END ..	0.3
4	2151L8	PLATE, PUMP SUCTION	0.1
5	2151H2	PIPE, CASING :OUTLET	0.1
6	2151G4	IMPELLER, CASING	0.2
7	2151G3	CASE, CASING VOLUTE	0.2
8	2151M3	PACKING, WATER PUMP CASING END PLATE	0.2
9	2151M4	RING, CASING VOLUTE CASE SEAL ..	0.2
	2151M7	PACKING, CASING OUTLET	0.2
14	2151G5	SEAL, CASING MECHANICAL	0.3
15	2151L9	PACKING, PUMP SUCTION	0.1
16	8101X0	HANDLE, CASING	0.1

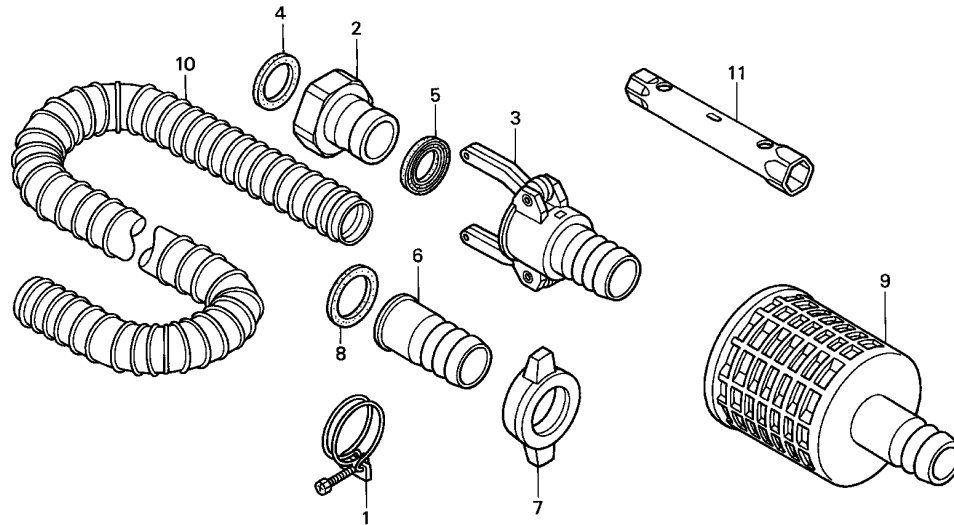
YF23-F0100

Ref. No.	Part No.	Description	Reqd. QTY	Serial No.	Parts catalogue code
			wx 15		
1	22542-900-000	GRIP, LEVER	1		
2	78101-YF2-003	CASING	1		
3	78102-YF2-003	PLATE, END	1		
4	78103-YF2-003	PLATE, SUCTION (PF)	1	-----	DX2,DX2/A,DX2/B,DX3,DX3/A,DX3/B,D1,D1/A,D1/B,D3,D3/A,D3/B,EX1,EX1/A,EX1/B,EX3,EX3/A,EX3/B,E1,E1/A,E1/B,E3,E3/A,E3/B,U1,U1/A,U1/B,U3
	78103-YF2-611	PLATE, SUCTION (NPT)	1	-----	CX1,CX1/A,CX1/B
5	78104-YF2-003	PIPE, OUTLET (PF)	1	-----	DX2,DX2/A,DX2/B,DX3,DX3/A,DX3/B,D1,D1/A,D1/B,D3,D3/A,D3/B,EX1,EX1/A,EX1/B,EX3,EX3/A,EX3/B,E1,E1/A,E1/B,E3,E3/A,E3/B,U1,U1/A,U1/B,U3
	78104-YF2-611	PIPE, OUTLET (NPT)	1	-----	CX1,CX1/A,CX1/B
6	78106-YF2-003	IMPELLER	1		
7	78107-YF2-003	CASE, VOLUTE	1		
8	78112-YF2-003	PACKING, END PLATE	1		
9	78115-YB0-003	RING A, SEAL	2		
10	78117-YB7-020	CAP, FILLER	2		
11	78118-YB0-003	RING, SEAL (B)	2		
12	78122-YF2-003	SHIM, ADJUSTER	N		
13	78125-YF2-003	CASE, SPACER	1		
14	78130-YF2-003	SEAL ASSY., MECHANICAL	1		
15	78159-YF2-003	PACKING, SUCTION	1		
16	78206-YF2-000	HANDLE	1		
17	90441-028-010	WASHER, SEALING, 6MM	4		
18	94001-12000-0S	NUT, HEX., 12MM	1		
19	95701-06016-00	BOLT, FLANGE, 6X16	12		
20	95701-06018-00	BOLT, FLANGE, 6X18	4		
21	95701-06055-00	BOLT, FLANGE, 6X55	6		
22	95701-06085-00	BOLT, FLANGE, 6X85	2		

F-2

HOSE COUPLING

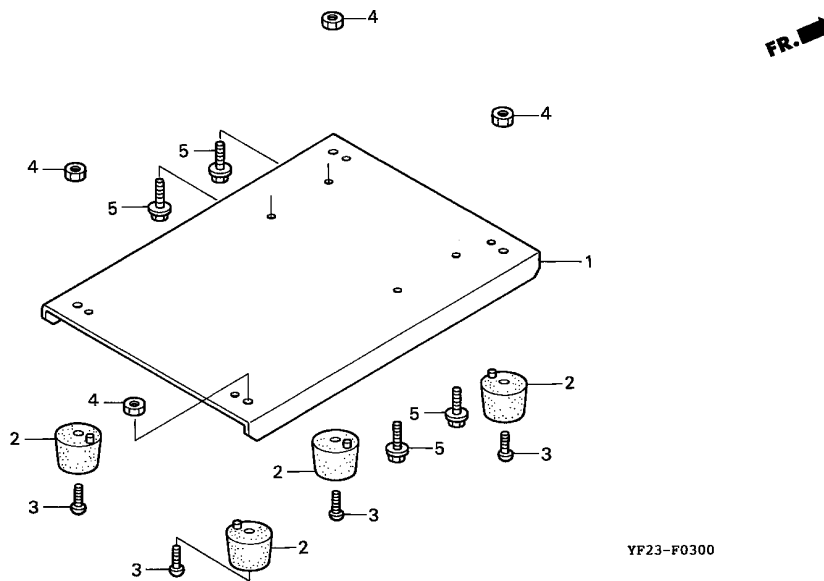
F 2



YF23-F0200

Ref. No.	L.O.N.	(Relative ref. Number) Description	F.R.T.
4	2151P3	PACKING, MALE COUPLER	0.1
5	2151H6	PACKING, FEMALE COUPLER	0.1
8	2151G0	PACKING, HOSE COUPLING	0.1

Ref. No.	Part No.	Description	Reqd. QTY	Serial No.	Parts catalogue code
			WX 15		
1	78139-YB0-760	BAND, HOSE	3		
2	78176-YF2-800	COUPLER, MALE	2	-----	DX3,DX3/A,DX3/B,D3,D3/A,D3/B,EX3,EX3/A,EX3/B,E3,E3/A,E3/B,U3
3	78177-YF2-800	COUPLER, FEMALE	2	-----	DX3,DX3/A,DX3/B,D3,D3/A,D3/B,EX3,EX3/A,EX3/B,E3,E3/A,E3/B,U3
4	78178-YF2-800	PACKING, MALE COUPLER	2	-----	DX3,DX3/A,DX3/B,D3,D3/A,D3/B,EX3,EX3/A,EX3/B,E3,E3/A,E3/B,U3
5	78179-YF2-800	PACKING, FEMALE COUPLER	2	-----	DX3,DX3/A,DX3/B,D3,D3/A,D3/B,EX3,EX3/A,EX3/B,E3,E3/A,E3/B,U3
6	78311-YF2-000	COUPLING, HOSE	2	-----	DX2,DX2/A,DX2/B,D1,D1/A,D1/B,EX1,EX1/A,EX1/B,E1,E1/A,E1/B,U1,U1/A,U1/B
7	78312-YF2-000	RING, HOSE CLAMP	2	-----	DX2,DX2/A,DX2/B,D1,D1/A,D1/B,EX1,EX1/A,EX1/B,E1,E1/A,E1/B,U1,U1/A,U1/B
8	78313-YF2-000	PACKING, COUPLING	2	-----	DX2,DX2/A,DX2/B,D1,D1/A,D1/B,EX1,EX1/A,EX1/B,E1,E1/A,E1/B,U1,U1/A,U1/B
9	78325-YB0-751	STRAINER COMP.	1		
10	78330-YB0-750	HOSE, SUCTION (5M)	1	-----	DX2,DX2/A,DX2/B
11	89216-045-010	WRENCH, SPARK PLUG	1		

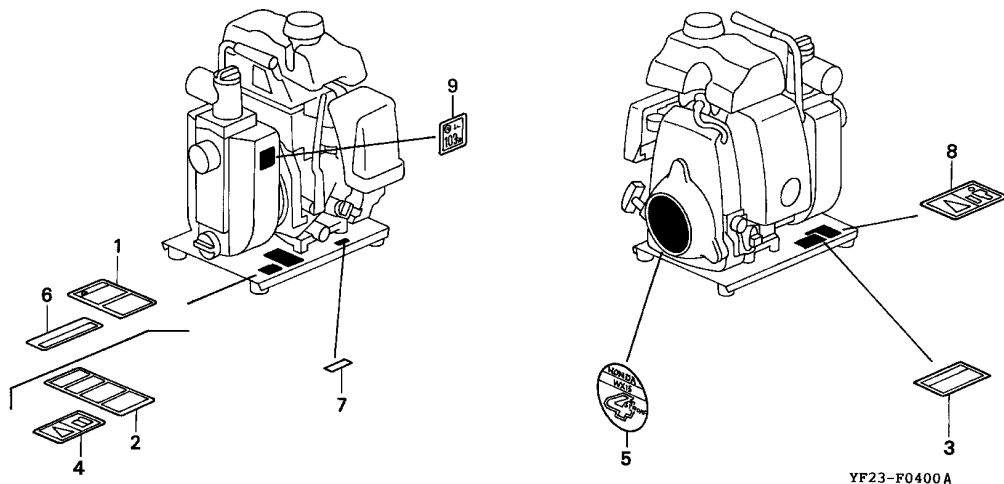


Ref. No.	L.O.N.	(Relative ref. Number) Description	F.R.T.
1	4101A7	BED, FRAMEINCLUDES: Engine removal and installation	0.2
2	4101V0	RUBBER, BOTTOM :LEFT FRONT ...	0.1
	4101V1	RUBBER, BOTTOM :RIGHT FRONT ..	0.1
	4101V3	RUBBER, BOTTOM :LEFT REAR	0.1
	4101V4	RUBBER, BOTTOM :RIGHT REAR ...	0.1

YF23-F0300

3

Ref. No.	Part No.	Description	Reqd. QTY	Serial No.	Parts catalogue code
			WX 15		
1	50331-YF2-000	BED, FRAME	1		
2	60407-812-001	RUBBER, BOTTOM	4		
3	93500-06010-0A	SCREW, PAN, 6X10	4		
4	94001-06000-0S	NUT, HEX., 6MM	4		
5	95701-06014-00	BOLT, FLANGE, 6X14	4		



Ref. L.O.N. (Relative ref. Number) F.R.T.
No. Description

NO INFORMATION

Ref. No.	Part No.	Description	Reqd. QTY	Serial No.	Parts catalogue code
			WX 15		
1	78141-YF3-620	LABEL, CAUTION (PUMP)	1	-----	CX1, CX1/A, CX1/B, U1, U1/A, U1/B, U3
2	78141-YF3-630	LABEL, CAUTION (PUMP)	1	-----	DX2, DX2/A, DX2/B, DX3, DX3/A, DX3/B, D1, D1/A, D1/B, D3, D3/A, D3/B
	78141-YF3-660	1	-----	EX1, EX1/A, EX1/B, EX3, EX3/A, EX3/B, E1, E1/A, E1/B, E3, E3/A, E3/B
3	78142-YF3-610	LABEL, PUMP WARNING (ENGLISH)	1	-----	CX1, CX1/A, CX1/B
	78142-YF3-620	LABEL, PUMP WARNING (FRENCH)	1	-----	CX1, CX1/A, CX1/B
4	87516-YE9-660	MARK, OPERATOR CAUTION	1	1010106	EX1, EX3, E1, E3
	87516-YF3-660	1	-----	EX1/A, EX1/B, EX3/A, EX3/B, E1/A, E1/B, E3/A, E3/B
5	87521-ZM7-G00	EMBLEM (WX15)	1	1010107	EX1, EX3, E1, E3
			1	-----	CX1, DX2, DX3, D1, D3, EX1, EX3, E1, E3, U1, U3
	87521-ZM7-G01	1	1020111	CX1/A, DX2/A, DX3/A, D1/A, D3/A, EX1/A, EX3/A, E1/A, E3/A, U1/A
			1	-----	CX1/B, DX2/B, DX3/B, D1/B, D3/B, EX1/B, EX3/B, E1/B, E3/B, U1/B
			1	1020112	CX1/A, DX2/A, DX3/A, D1/A, D3/A, EX1/A, EX3/A, E1/A, E3/A, U1/A
6	87530-ZL8-820	MARK, OIL ALERT (FRENCH)	1	-----	CX1, CX1/A, CX1/B
	87530-ZL8-850	MARK, OIL ALERT (ENGLISH) ...	1	-----	CX1, CX1/A, CX1/B, DX2, DX2/A, DX2/B, DX3, DX3/A, DX3/B
7	87531-YE9-000	MARK, OIL CAUTION	1	-----	
8	87539-ZA8-660	MARK, EX. CAUTION	1	-----	EX1, EX1/A, EX1/B, EX3, EX3/A, EX3/B, E1, E1/A, E1/B, E3, E3/A, E3/B
9	87616-YE5-B30	LABEL, NOISE LEVEL (103)	1	-----	EX1/A, EX1/B, EX3/A, EX3/B, E1/A, E1/B, E3/A, E3/B
			1	1050923	EX1, EX3, E1, E3

PART NO. INDEX

G 1

Part Number	Address	Page	Ref.	Part Number	Address	Page	Ref.	Part Number	Address	Page	Ref.	Part Number	Address	Page	Ref.
11000				16011-ZE0-005	D11	28	2	18000				36100-ZH8-W41	D16	33	9
11300-ZM7-000	D2	19	1	16013-ZG0-811	D11	28	3	18310-ZM7-003	D14	31	1	50000			
11300-ZM7-406	D2	19	1	16015-ZG0-811	D11	28	4	18310-ZM7-801	D14	31	1	89000			
11300-ZM7-407	D2	19	1	16016-ZE0-005	D11	28	5	18320-ZM7-000	D14	31	2	50331-YF2-000	F3	38	1
11300-ZM7-800	D2	19	1	16016-ZH7-W01	D12	29	22	18350-ZM7-801	D14	31	3	60000			
11340-ZM7-010	D3	20	1	16016-ZH8-W01	D12	29	22	18515-ZM7-000	D14	31	4	60407-812-001	F3	38	2
11340-ZM7-020	D3	20	1	16024-ZE1-811	D11	28	6	19000				78000			
				16028-ZG0-811	D11	28	7	19052-MB4-880	D15	32	8	78101-YF2-003	F1	36	2
				16044-ZM7-003	D11	28	8	19610-ZM7-000ZA	D10	27	1	78102-YF2-003	F1	36	3
12000				16044-ZM7-801	D11	28	8	19610-ZM7-000ZC	D10	27	1	78103-YF2-003	F1	36	4
12100-ZM7-000	D1	18	1	16100-ZM7-G01	D11	28	9	19631-ZM7-000	D1	18	6	78104-YF2-003	F1	36	5
12100-ZM7-407	D1	18	1	16100-ZM7-G11	D11	28	9	22542-900-000	F1	36	1	78104-YF2-611	F1	36	5
12100-ZM7-417	D1	18	1	16100-ZM7-G13	D11	28	9	28000				78106-YF2-003	F1	36	6
12209-ZM7-003	D6	23	14	16100-ZM7-G14	D11	28	9	28400-ZM7-003	D9	26	1	78107-YF2-003	F1	36	7
12311-ZM7-000	D1	18	2	16100-ZM7-G15	D11	28	9	28404-968-004	D9	26	12	78112-YF2-003	F1	36	8
12311-ZM7-010	D1	18	2	16124-ZE0-005	D11	28	10	28414-ZM7-003	D9	26	2	78115-YB0-003	F1	36	9
12367-ZE6-010	D1	18	14	16166-ZM7-003	D11	28	11	28421-ZM7-003	D9	26	3	78117-YB7-020	F1	36	10
				16166-ZM7-801	D11	28	11	28433-ZM3-003	D9	26	4	78118-YB0-003	F1	36	11
				16166-ZN4-801	D12	29	11	28442-ZL8-003	D9	26	13	78122-YF2-003	F1	36	12
13000				16211-ZM7-000	D12	29	12	28451-ZM7-003	D9	26	5	78125-YF2-003	F1	36	13
13010-ZM7-000	D5	22	1	16212-ZM7-000	D12	29	13	28459-ZM7-003	D9	26	6	78130-YF2-003	F1	36	14
13101-ZM7-000	D5	22	2	16221-ZG0-801	D12	29	14	28461-ZM3-003	D9	26	7	78139-YB0-760	F2	37	1
13101-ZM7-010	D5	22	2	16500-ZM7-000	E1	34	1	28462-ZM7-003	D9	26	8	78141-YF3-620	F4	39	1
13111-122-000	D5	22	3	16510-ZM7-000	D3	20	2	30000				78141-YF3-630	F4	39	2
13115-147-000	D5	22	4	16531-ZM7-000	D3	20	3	30500-ZM7-004	D16	33	1	78142-YF3-660	F4	39	2
13200-ZM7-000	D5	22	5	16541-ZM7-000	D1	18	5	31000				78142-YF3-610	F4	39	3
13281-ZM7-000	D5	22	7	16551-ZM7-000	E1	34	2	31110-ZM7-004	D16	33	2	78142-YF3-620	F4	39	3
13310-ZM7-600	D4	21	1	16555-ZM7-000	E1	34	3	32000				78159-YF2-003	F1	36	15
13331-ZM7-000	D4	21	2	16561-ZM7-000	E1	34	4	34000				78176-YF2-800	F2	37	2
				16562-ZM7-000	E1	34	5	35000				78177-YF2-800	F2	37	3
				16571-ZM7-000	E1	34	6	35120-ZM7-003	D16	33	5	78178-YF2-800	F2	37	4
				16574-ZE1-000	E1	34	7	35120-ZM7-801	D16	33	5	78179-YF2-800	F2	37	5
				16575-ZH8-000	E1	34	8	35124-ZM7-000	D16	33	6	78206-YF2-000	F1	36	16
14000				16578-ZE1-000	E1	34	9	35124-ZM7-800	D16	33	7	78311-YF2-000	F2	37	6
14100-ZM7-000	D6	23	1	16580-ZM7-000	E1	34	10	35124-ZM7-000	D16	33	6	78312-YF2-000	F2	37	7
14100-ZM7-010	D6	23	1	16584-ZE3-790	E1	34	11	35124-ZM7-800	D16	33	7	78313-YF2-000	F2	37	8
14126-Z0G-003	D6	23	2	16952-ZE6-000	D15	32	1	35480-ZM7-801	D16	33	8	78325-YB0-751	F2	37	9
14410-ZM7-000	D6	23	3	16953-ZG0-812	D12	29	15	78330-YB0-750	F2	37	10	87000			
14431-ZM7-000	D6	23	4	16954-ZE1-812	D12	29	16	87135-ZE2-010	E2	35	3	87135-ZE2-020	E2	35	3
14435-ZM7-003	D6	23	5	16956-ZE1-811	D12	29	17	87135-ZE2-020	E2	35	3	87516-YE9-660	F4	39	4
14451-ZM7-000	D6	23	6	16957-ZE1-812	D12	29	18	87516-YF3-660	F4	39	4	87521-ZM7-000	F4	39	5
14711-ZM7-000	D6	23	7	17000				87521-ZM7-000	F4	39	5	87521-ZM7-G01	F4	39	5
14721-ZM7-000	D6	23	8	17211-ZM7-000	D13	30	1	87528-ZG0-W40	E2	35	1	87530-ZL8-820	F4	39	6
14731-ZM7-003	D6	23	9	17220-ZM7-000	D13	30	2	87530-ZL8-850	F4	39	6	87531-YE9-000	F4	39	7
14731-ZM7-013	D6	23	9	17227-ZM7-000	D13	30	3	87532-ZM3-G00	E2	35	2	87532-ZM3-G00	E2	35	2
14751-ZM7-000	D6	23	10	17228-ZM7-000	D13	30	4	87539-ZA8-660	F4	39	8	94001-06000-0S	F3	38	4
14754-ZM7-000	D6	23	11	17230-ZM7-000	D13	30	5	94001-12000-0S	F1	36	18	94050-05000	D9	26	11
14771-ZM3-000	D6	23	12	17511-ZM7-000	D15	32	2	94001-12000-0S	F1	36	18				
14771-ZM3-010	D6	23	12	17532-ZM7-000	D15	32	3								
				17533-ZM7-000	D15	32	4								
15000				17560-ZM7-000	D15	32	5								
15571-ZM7-003	D1	18	3	17620-ZL8-003	D15	32	6								
15572-ZM7-000	D1	18	4	17620-ZL8-013	D15	32	6								
15600-ZM7-003	D2	19	2	17622-ZL8-003	D15	32	12								
15625-ZE1-003	D2	19	3	17624-ZL8-003	D15	32	13								
				17701-ZM7-000	D15	32	7								
16000															
16010-ZG0-015	D11	28	1												

PART NO. INDEX

G 2

Part Number	Address	Page	Ref.	Part Number	Address	Page	Ref.	Part Number	Address	Page	Ref.	Part Number	Address	Page	Ref.
94050-06000	E1	34	16												
94050-10000	D16	33	14												
94251-06000	D1	18	11												
94301-06100	D3	20	8												
95000															
95002-02080	D15	32	9												
95002-02100	D15	32	10												
95002-02120	D15	32	10												
95005-70075-30	D13	30	9												
95701-06008-00	D16	33	15												
95701-06014-00	F3	38	5												
95701-06016-00	F1	36	19												
95701-06018-00	F1	36	20												
95701-06020-07	D15	32	11												
95701-06055-00	F1	36	21												
95701-06085-00	F1	36	22												
95701-08012-08	D2	19	7												
96000															
96220-60150	D1	18	12												
98000															
98056-54757	D1	18	13												
98056-54777	D1	18	13												
98056-55757	D1	18	13												
98056-55777	D1	18	13												
99000															
99101-ZG0-0480	D12	29	20												
99101-ZG0-0500	D12	29	20												
99101-ZG0-0520	D12	29	20												
99101-ZG0-0550	D12	29	20												
99204-ZE2-0350	D12	29	21												

4

PART NAME INDEX

H 1

Part name	Address	Page	Ref.	Part name	Address	Page	Ref.	Part name	Address	Page	Ref.
[A]				COIL ASSY., IGNITION	D16	33	1	KNOB, RECOIL STARTER.....	D9	26	7
ALERT UNIT, OIL	D16	33	4	COLLAR	D9	26	10	[L]			
ARM, GOVERNOR	E1	34	2	COLLAR, AIR CLEANER	D13	30	8	LABEL, CAUTION	F4	39	1
ARM, SWING	D9	26	6	COLLAR, CANISTER MOUNTING.....	D15	32	8	LABEL, E-SPEC.....	E2	35	3
ARM, VALVE ROCKER	D6	23	4	COLLAR, LIFTER	D6	23	11	LABEL, NOISE LEVEL	F4	39	9
ARRESTER COMP., SPARK	D14	31	3	COLLAR, TOP COVER	D14	31	9	LABEL, PUMP WARNING.....	F4	39	3
[B]				CONTROL ASSY.	E1	34	1	LEVER, COCK	D12	29	15
BAND, HOSE	F2	37	1	CORD, STOP SWITCH	D16	33	3	LEVER, CONTROL	E1	34	6
BARREL COMP., CYLINDER	D1	18	1	COUPLER, FEMALE	F2	37	3	LIFTER, VALVE.....	D6	23	9
BASE COMP., CONTROL	E1	34	10	COUPLER, MALE	F2	37	2	[M]			
BED, FRAME	F3	38	1	COUPLING, HOSE	F2	37	6	MARK	E2	35	4
BOLT, CONNECTING ROD	D5	22	8	COVER COMP., AIR CLEANER	D13	30	5	MARK, COCK	E2	35	1
BOLT, FLANGE, 5X12	D1	18	7	COVER COMP., CRANKCASE SIDE ...	D3	20	1	MARK, EX. CAUTION.....	F4	39	8
	E1	34	12	COVER COMP., FAN	D10	27	1	MARK, OIL ALERT	F4	39	6
BOLT, FLANGE, 5X14	D16	33	11	COVER, HEAD	D1	18	2	MARK, OIL CAUTION.....	F4	39	7
BOLT, FLANGE, 5X16	D14	31	6	CRANKSHAFT COMP.	D4	21	1	MARK, OPERATOR CAUTION.....	F4	39	4
BOLT, FLANGE, 5X20	D16	33	10	[D]				MARK, THROTTLE INDICATION.....	E2	35	2
BOLT, FLANGE, 5X23	D2	19	4	DIPPER, CONNECTING ROD	D5	22	7	MUFFLER COMP.....	D14	31	1
	D3	20	4	DOWEL PIN, 6X10	D3	20	8	[N]			
BOLT, FLANGE, 5X35	D14	31	7	[E]				NOZZLE, MAIN	D11	28	11
BOLT, FLANGE, 5X75	D13	30	7	ELEMENT, AIR CLEANER	D13	30	1	NOZZLE, MAIN	D12	29	11
BOLT, FLANGE, 6X14	F3	38	5	EMBLEM	F4	39	5	NUT, FLANGE, 10MM.....	D16	33	14
BOLT, FLANGE, 6X16	F1	36	19	[F]				NUT, FLANGE, 5MM	D9	26	11
BOLT, FLANGE, 6X18	F1	36	20	FILTER, BREATHER	D1	18	14	NUT, FLANGE, 6MM	E1	34	16
BOLT, FLANGE, 6X20	D15	32	11	FLOAT SET	D11	28	3	NUT, HEX., 12MM	F1	36	18
BOLT, FLANGE, 6X55	F1	36	21	FLYWHEEL COMP.	D16	33	2	NUT, HEX., 6MM	F3	38	4
BOLT, FLANGE, 6X8	D16	33	15	[G]				NUT, SELF-LOCK, 5MM	D14	31	8
BOLT, FLANGE, 6X85	F1	36	22	GASKET SET	D11	28	1	NUT, SELF-LOCK, 6MM	E1	34	14
BOLT, FLANGE, 8X12	D2	19	7	GOVERNOR ASSY.	D3	20	2	NUT, TAPPET ADJUSTING.....	D6	23	13
BOLT, GOVERNOR ARM	E1	34	13	GRIP, LEVER	F1	36	1	[O]			
BOLT, STUD	D10	27	2	GUIDE, AIR	D14	31	4	OIL SEAL, 17X27X5.....	D2	19	6
			3	GUIDE, ROPE	D9	26	4		D3	20	7
BOLT, STUD, 2,5X55	D14	31	5	[H]				OIL SEAL, 5X11X5.....	D1	18	9
BRACKET COMP., STOP SWITCH ...	D16	33	6	HANDLE	F1	36	16	O-RING, 34.6X2.5.....	D16	33	13
			7	HOSE, SUCTION	F2	37	10	[P]			
[C]				[I]				PACKING, 8MM	D2	19	5
CAMSHAFT ASSY.	D6	23	1	IMPELLER	F1	36	6	PACKING, AIR CLEANER.....	D13	30	4
CAP ASSY., FUEL TANK	D15	32	6	INSULATOR, CARBURETOR.....	D12	29	12	PACKING, CARBURETOR	D12	29	14
CAP ASSY., OIL FILLER	D2	19	2	[J]				PACKING, COUPLING	F2	37	8
CAP, FILLER	F1	36	10	JET SET, PILOT,	D12	29	21	PACKING, END PLATE	F1	36	8
CARBURETOR ASSY.	D11	28	9	JET, MAIN,	D12	29	20	PACKING, FEMALE COUPLER.....	F2	37	5
CASE ASSY., OIL	D2	19	1	[K]				PACKING, FUEL CAP	D15	32	13
CASE COMP., AIR CLEANER	D13	30	2	KEY, SPECIAL	D4	21	2	PACKING, FUEL COCK	D12	29	18
CASE, RECOIL STARTER	D9	26	2	[L]				PACKING, INSULATOR	D12	29	13
CASE, SPACER	F1	36	13	[M]				PACKING, MALE COUPLER.....	F2	37	4
CASE, VOLUTE	F1	36	7	[N]				PACKING, OIL FILLER CAP.....	D2	19	3
CASING	F1	36	2	[O]				PACKING, SUCTION	F1	36	15
CHAMBER SET, FLOAT	D11	28	4	[P]				PIN, LOCK, 6MM	D1	18	11
CHOKE SET	D11	28	8	[Q]							
CLIP, GOVERNOR HOLDER	D3	20	6	[R]							
CLIP, HARNESS	D16	33	12	[S]							
CLIP, PISTON PIN, 10MM	D5	22	4	[T]							
CLIP, TUBE	D15	32	9	[U]							
			10	[V]							

PART NAME INDEX

H 2

Part name	Address	Page	Ref.	Part name	Address	Page	Ref.	Part name	Address	Page	Ref.
PIN, OIL PUMP	D6	23	2	SPRING, LEVER	E1	34	7				
PIN, PISTON, 10X33	D5	22	3	SPRING, RECOIL STARTER	D9	26	13				
PIPE, OUTLET	F1	36	5	SPRING, THROTTLE RETURN	E1	34	5				
PISTON	D5	22	2	SPRING, VALVE	D6	23	10				
PIVOT, ROCKER ARM	D6	23	6	STARTER ASSY., RECOIL	D9	26	1				
PLATE, END	F1	36	3	STAY COMP., FUEL TANK	D15	32	5				
PLATE, LEVER SETTING	D12	29	16	STRAINER COMP.	F2	37	9				
PLATE, STOPPER	D1	18	4	STRAINER, FUEL	D15	32	1				
PLATE, SUCTION	F1	36	4	SWITCH ASSY., ENGINE STOP	D16	33	5				
PLUG, SPARK	D1	18	13								
PROTECTOR COMP., MUFFLER	D14	31	2	SWITCH ASSY., OIL LEVEL	D16	33	8				
PULLEY, RECOIL STARTER	D9	26	5								
				[T]							
[R]				TANK, FUEL	D15	32	2				
REEL, RECOIL STARTER	D9	26	3	TUBE A, FUEL	D15	32	7				
RETAINER, VALVE SPRING	D6	23	12	TUBE, 7X75	D13	30	9				
RING A, SEAL	F1	36	9								
RING SET, PISTON	D5	22	1	[V]							
RING, HOSE CLAMP	F2	37	7	VALVE SET, FLOAT	D11	28	2				
RING, SEAL	F1	36	11	VALVE, EX.	D6	23	8				
ROD ASSY., CONNECTING	D5	22	5	VALVE, IN.	D6	23	7				
ROD, GOVERNOR	E1	34	3	VALVE, OIL OUTLET	D1	18	3				
ROD, PUSH	D6	23	3								
ROLLER	D6	23	2	[W]							
				WASHER, 4.2X13	D3	20	5				
ROLLER, 6X15	D1	18	12	WASHER, 5.2X9	D1	18	8				
ROPE, RECOIL STARTER	D9	26	8	WASHER, CONTROL LEVER	E1	34	8				
RUBBER A, TANK MOUNTING	D15	32	3	WASHER, SEALING, 6MM	F1	36	17				
RUBBER B, TANK MOUNTING	D15	32	4	WRENCH, SPARK PLUG	F2	37	11				
RUBBER, BOTTOM	F3	38	2								
				[S]							
SCREW SET	D11	28	7								
	D12	29	22								
SCREW SET, DRAIN	D11	28	6								
SCREW SET, PILOT	D11	28	5								
	D12	29	22								
SCREW, PAN, 3X5	D1	18	10								
SCREW, PAN, 3X6	D12	29	19								
SCREW, PAN, 5X20	E1	34	15								
SCREW, PAN, 6X10	F3	38	3								
SCREW, SETTING	D9	26	9								
SCREW, TAPPING, 4X8	D14	31	10								
SCREW, THROTTLE STOP	D11	28	10								
SEAL ASSY., MECHANICAL	F1	36	14								
SEAL, AIR CLEANER	D13	30	3								
SEAL, VALVE STEM	D6	23	14								
SHAFT, GOVERNOR ARM	D1	18	5								
SHIM, ADJUSTER	F1	36	12								
SHROUD	D1	18	6								
SLIDER, GOVERNOR	D3	20	3								
SPACER, CONTROL LEVER	E1	34	9								
SPONGE, FUEL CAP BREATHER	D15	32	12								
SPRING, COCK LEVER	D12	29	17								
SPRING, CONTROL ADJUSTING	E1	34	11								
SPRING, FRICTION	D9	26	12								
SPRING, GOVERNOR	E1	34	4								

1

FOREWORD INDEX

2

ENGINE GROUP

3

FRAME GROUP

4

PART NUMBER INDEX

5

PART NAME INDEX

HONDA
The Power of Dreams



PARTS CATALOGUE NEWS

Honda Motor Co., Ltd. Service Division

PARTS CATALOGUE - CORRECTED

Printed in Japan

CODE NO.	BOOKLET TYPE	13YF20E2
	MICRO-FICHE	13YF20EB/FB
PARTS CATALOGUE TITLE	WX15	
NEWS NO.	001	

Block No.	Ref. No.	Note	Part No.	Description	Reqd. QTY	Serial No.	Parts catalogue code
					WX 15		
E-17	2		17511-ZM7-000	TANK, FUEL	1	-----	CX1, CX1/A, DX2, DX2/A, DX3, DX3/A, D1, D1/A, D3, D3/A, EX1, EX1/A, EX3, EX3/A, E1, E1/A, E3, E3/A, U1, U1/A, U3
					1	-----	1574706 CX1/B, DX2/B, DX3/B, D1/B, D3/B, EX1/B, EX3/B, E1/B, E3/B, U1/B
		A	17511-ZM7-010	1	1574707	----- CX1/B, DX2/B, DX3/B, D1/B, D3/B, EX1/B, EX3/B, E1/B, E3/B, U1/B

NOTE A:PART NO.CHANGE D:NEWLY PROVIDED E:PART NO.DELETION K:REQUIRED NO.CORRECTION L:APPLICATION SERIAL NO.CORRECTION
T:APPLICATION CORRECTION Z:REMARKS CHANGE