

# **PARTS MANUAL**

**Models**

**EX27**

**ENGINE**

PUB-EP1679  
Rev. 08/03

# **Robin America, Inc.**

940 Lively Blvd. • Wood Dale, IL 60191 • Phone: 630-350-8200 • Fax: 630-350-8212  
e-mail: [sales@robinamerica.com](mailto:sales@robinamerica.com) • [www.robinamerica.com](http://www.robinamerica.com)

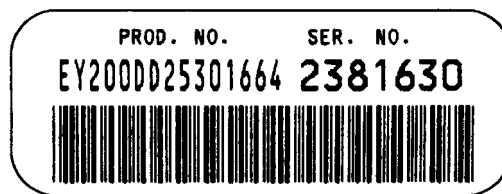
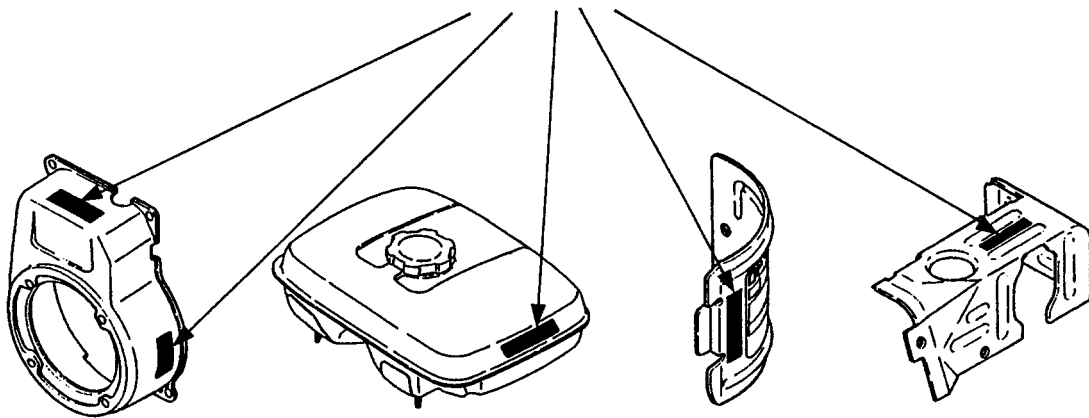
© Copyright 2003 Robin America, Inc.

## HOW TO USE THIS MANUAL

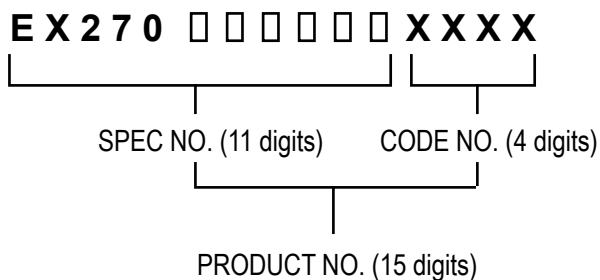
Robin engines are identified by MODEL, SPECIFICATION, and CODE NUMBER. For each model there may be many different versions called specifications. Each specification will be unique in some way. The difference may only be the paint color or it may have a different type of PTO or some other significant difference.

In order to identify the correct service part number, it is important to confirm the specification and code numbers for your engine. The specification and code number together are known as the PRODUCT NUMBER.

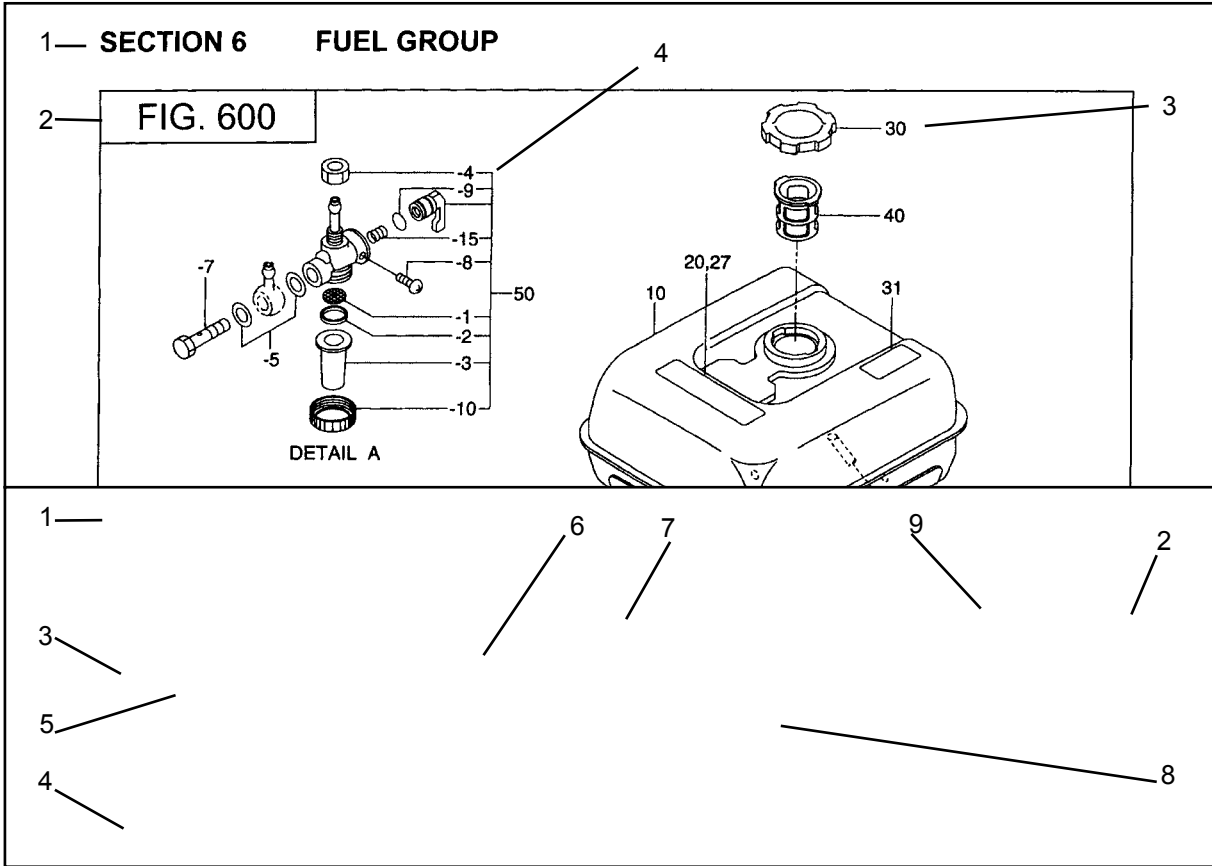
All Robin 4 cycle engines have a Product Number label similar to the label illustrated below.



The Product Number Label has a 15 digit alphanumeric string that consists of the SPECIFICATION (SPEC) number (11 digits) and the CODE number (4 digits). Please note the illustration below:



# MANUAL LAYOUT



- |                 |   |
|-----------------|---|
| 1. SECTION NAME | Parts are broadly classified according to their functions. Refer to the Group Index (table of contents) for respective section name.  |
| 2. FIG. No.     | The FIG. number indexes the reference and part numbers to the illustration. Figure numbers that vary only in the tens place (i.e.: 700 and 710) are in a group of the same section (i.e.:Electrical Device Group).                                |
| 3. REF. No .    | The Reference number identifies the part illustration with the corresponding part number in the part list.  |
| 4. SUBASSEMBLY  | SUBASSEMBLY parts of part assembly are listed below the assembly part. The subassembly part reference number is indicated by the number led by "-" such as "-1", "-2".  |
| 5. PART NUMBER  | It is the number assigned for sales unit. Use the PART No. when making an order.  |
| 6. DESCRIPTION  | It is designation of the part.  |
| 7. QTY.         | Quantity of each part used for each product.  |
| 8. REMARKS      | This gives a distinctive feature and/or a supplementary comment for the type, the specification, and the part concerned. It also shows part number(s) interchangeable for the part.   |
| 9. FROM-TO      | This section shows the CODE No. to indicate the history of progress in which improved parts have been introduced in the product. The FROM-TO CODE No. helps to identify PART No. being employed in the product concerned. See the examples below: |
| -               | The part is used in the product irrespective of CODE No.  |
| 2101-           | The part is used in the products with CODE No. of 2101 and after this number.   |
| - 2100          | The part is used in the products with CODE No. of 2100 and before this number.  |

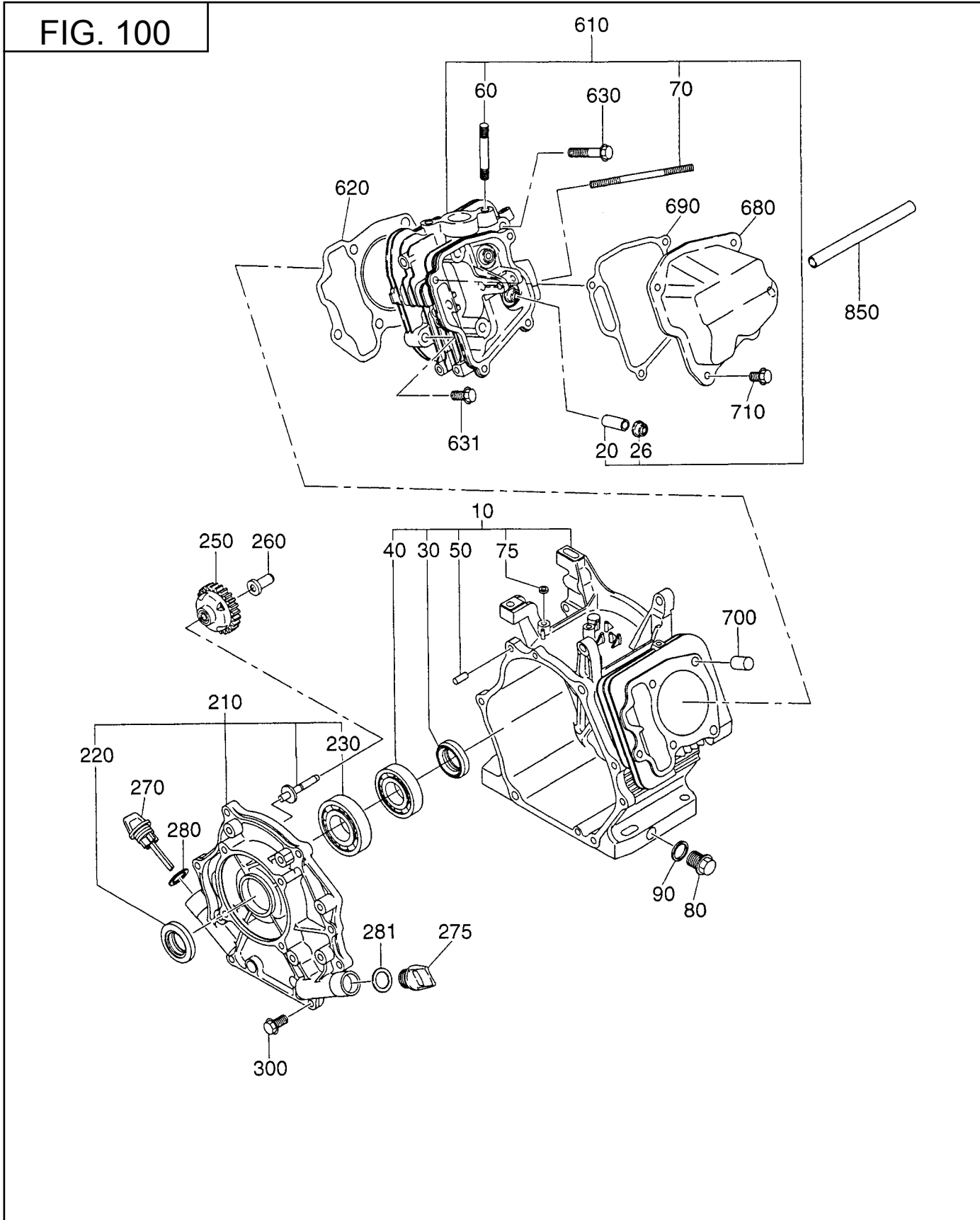
# GROUP INDEX

Group Name	Page
CRANKCASE GROUP .....	6
CRANKSHAFT GROUP .....	8
INTAKE and EXHAUST GROUP .....	10
GOVERNOR GROUP .....	14
COOLING and STARTING GROUP .....	16
FUEL, LUBRICANT GROUP .....	18
CARBURETOR GROUP .....	20
ELECTRIC DEVICE GROUP .....	22
ACCESSORY GROUP .....	24

INDEX OF DESCRIPTION SYMBOLS			
SYMBOL	DESCRIPTION	SYMBOL	DESCRIPTION
AY .....	ASSEMBLY	P= .....	PITCH (in mm)
CP .....	COMPLETE	P.T.O. (PTO) .....	POWER TAKE OFF
EX .....	EXPORT (from Japan)	REF .....	REFERENCE
FIG .....	FIGURE	R.H. (RH) .....	RIGHT HAND SIDE
FR .....	FRONT	RR .....	REAR
" .....	INCH	STD. ....	STANDARD
INCL. ....	INCLUDE	SW .....	SWITCH
~L .....	LITER	T= .....	THICKNESS (in mm)
L= .....	LENGTH (in. mm)	UN .....	UNIT
L.H. (LH) .....	LEFT-HAND SIDE	U.S. ....	UNDER SIZE
MECH .....	MECHANICAL	~V .....	VOLTAGE
NO (NON) .....	NONE	~W .....	WATT
OPT .....	OPTIONAL	W/ .....	WITH
O.S. ....	OVER SIZE	W/O .....	WITHOUT

SECTION 1 CRANKCASE GROUP

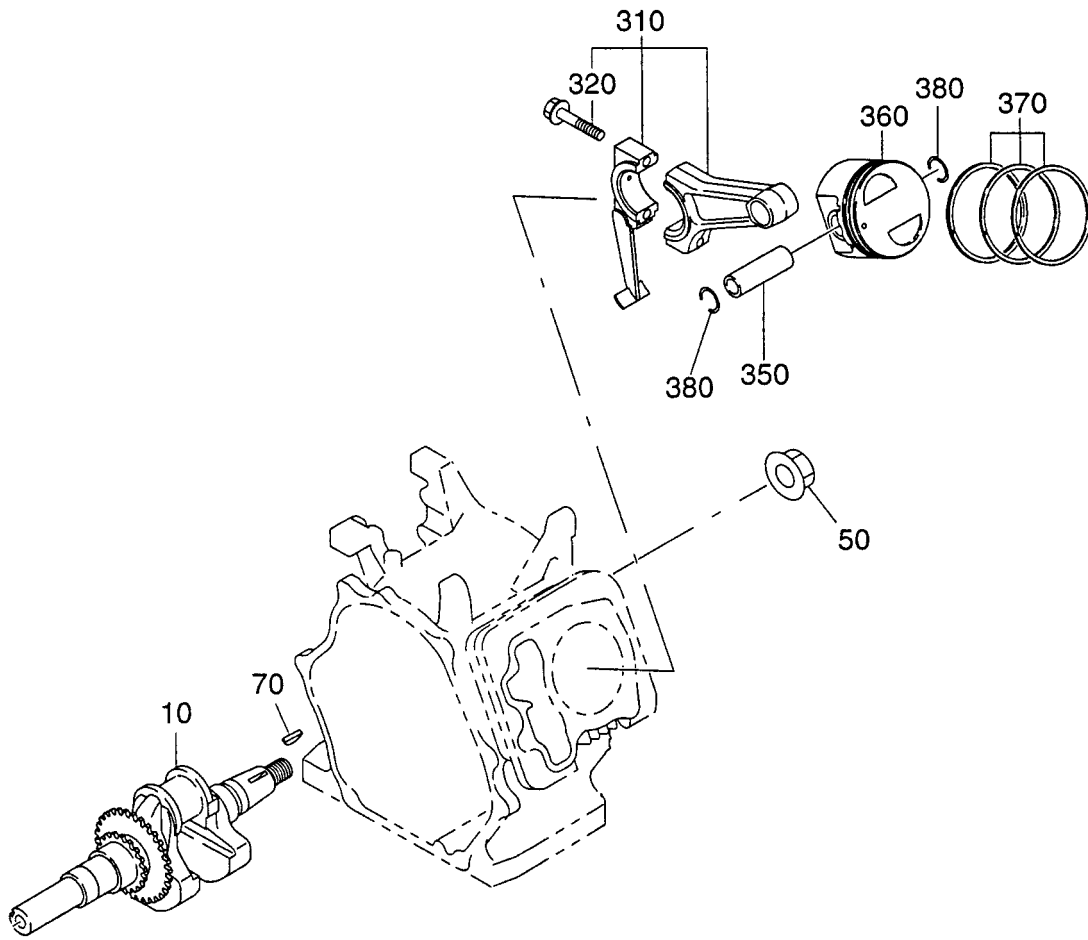
FIG. 100





SECTION 2 CRANKSHAFT GROUP

FIG. 200







SECTION 3 INTAKE and EXHAUST GROUP - NEW STYLE

FIG. 300

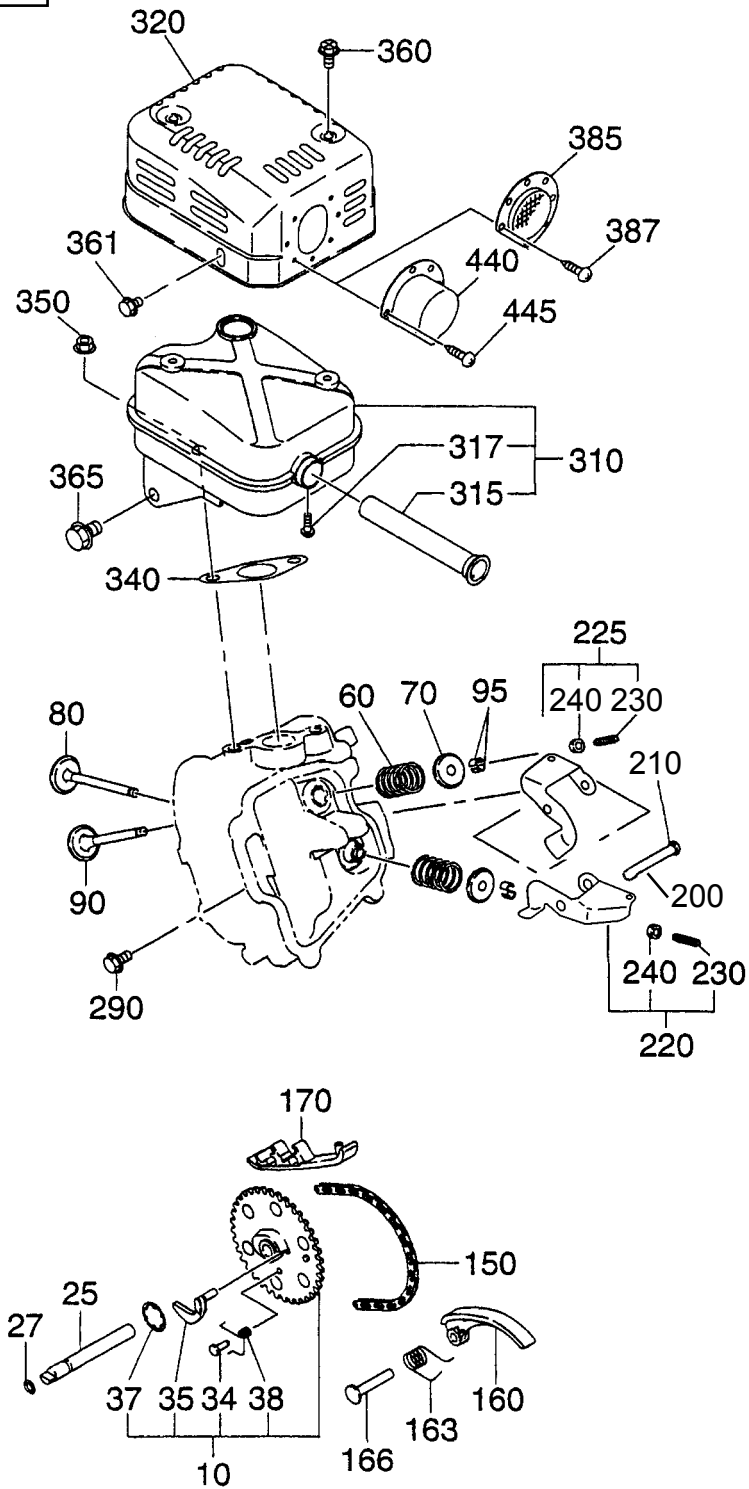
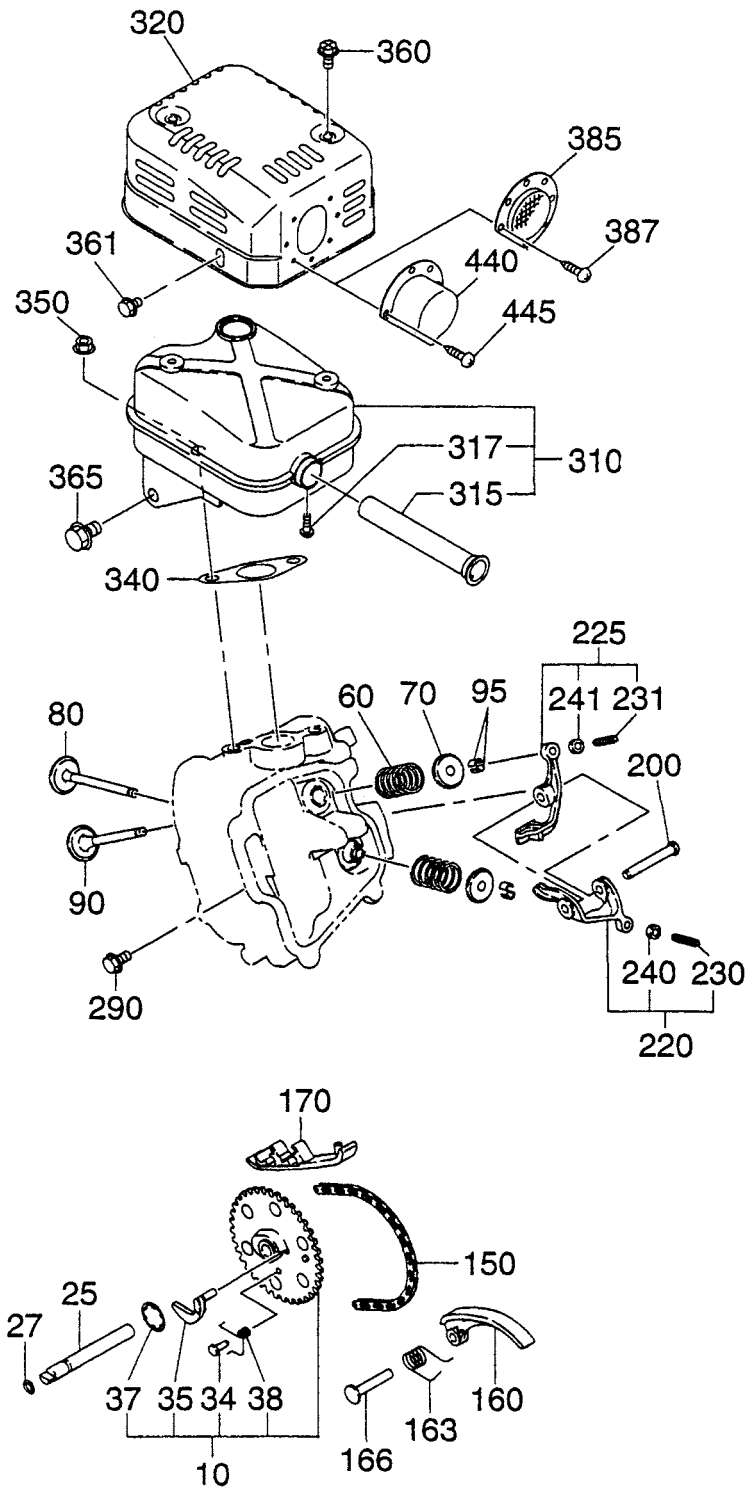




FIG. 300

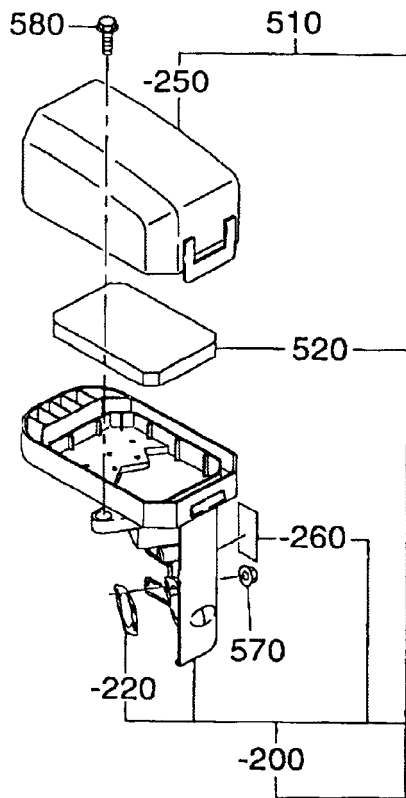




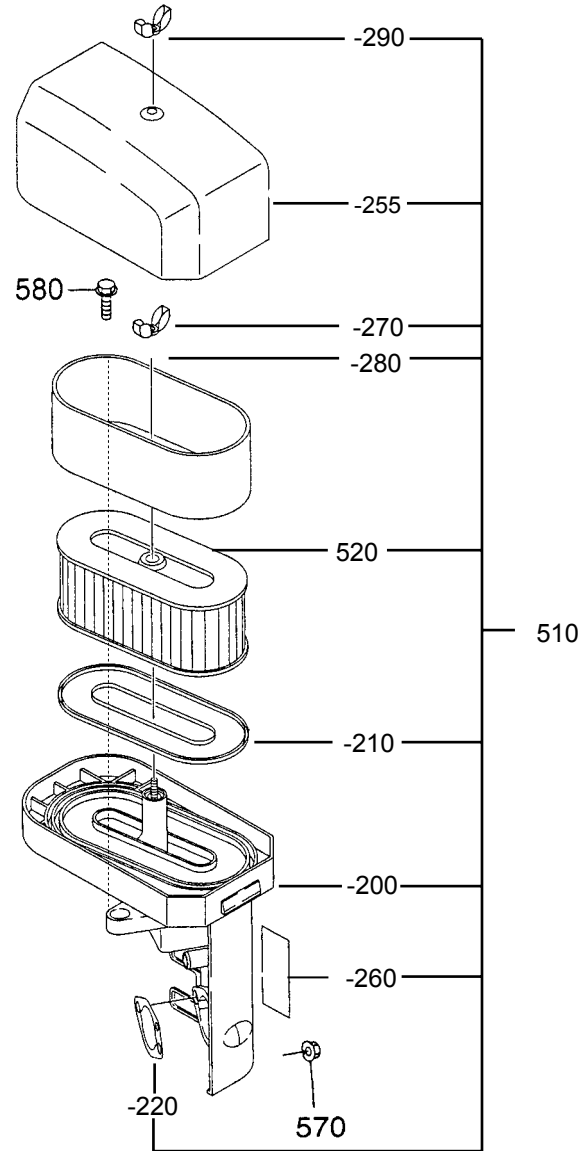
SECTION 3 INTAKE and EXHAUST GROUP

FIG. 310

A



B

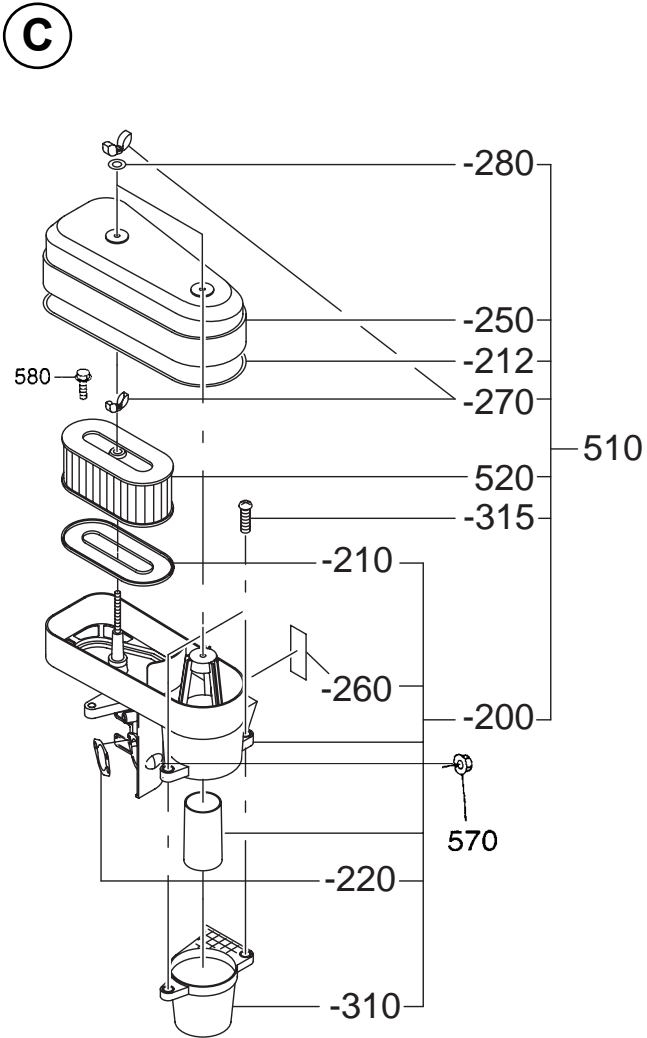




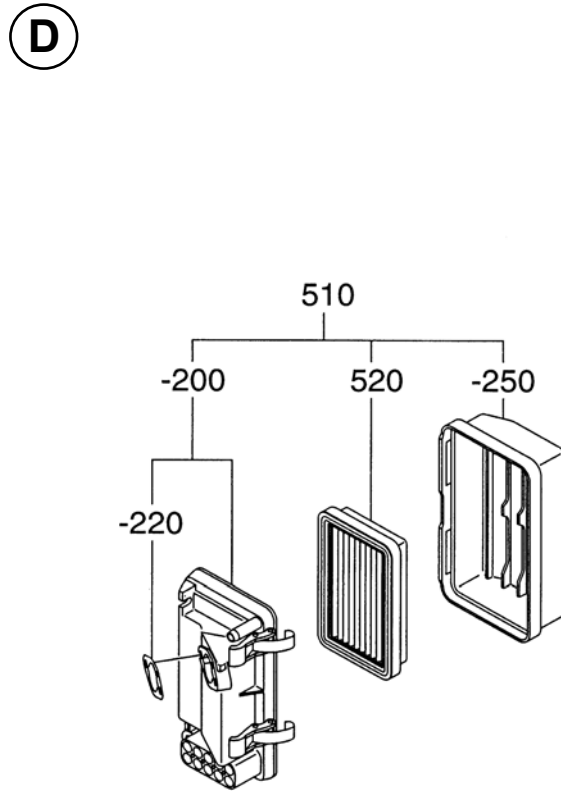
**SECTION 3 INTAKE and EXHAUST GROUP**

**FIG. 320**

**Cyclone Pre-Cleaner**



**Low Profile**

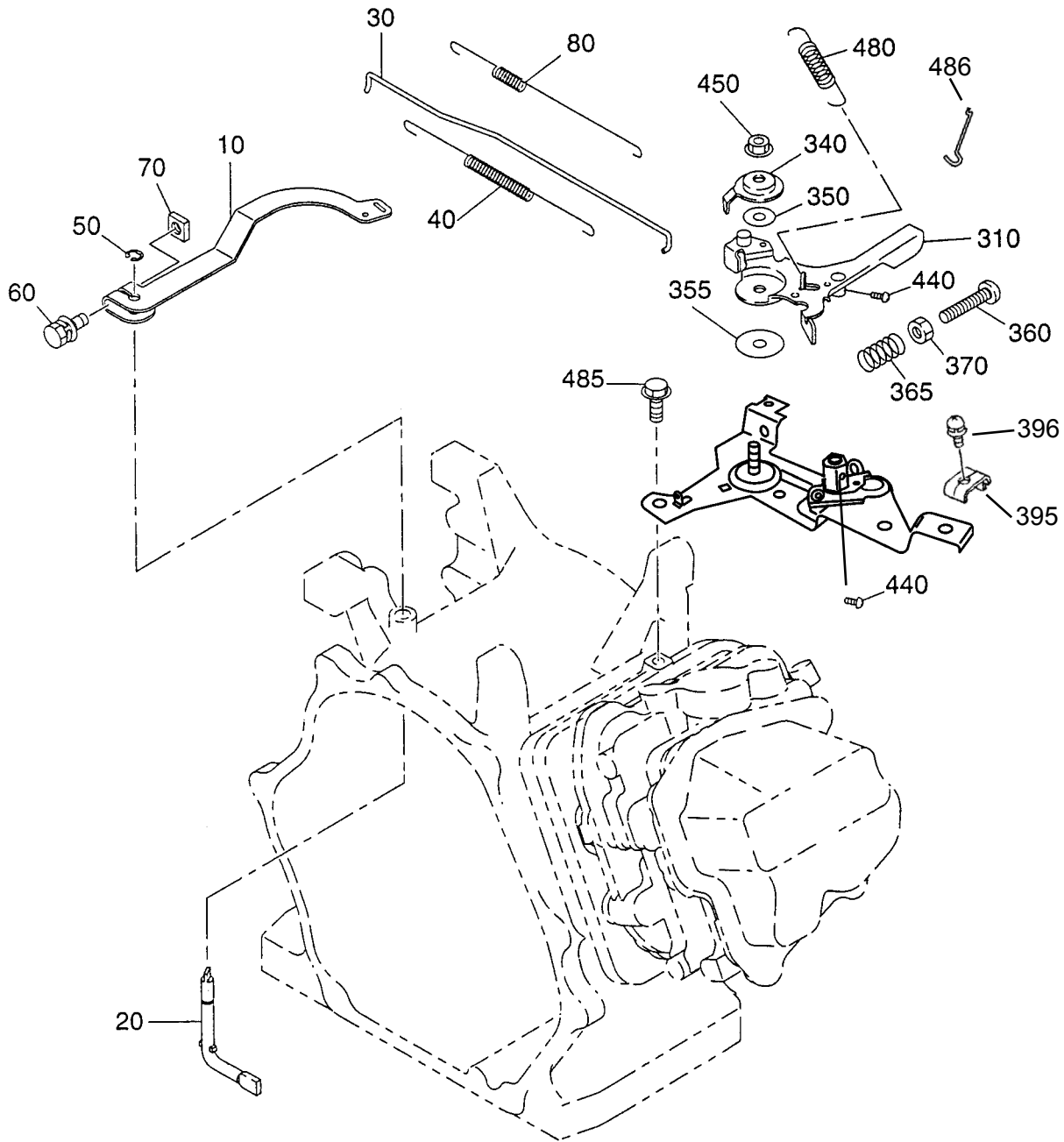






SECTION 4 GOVERNOR GROUP - NEW STYLE

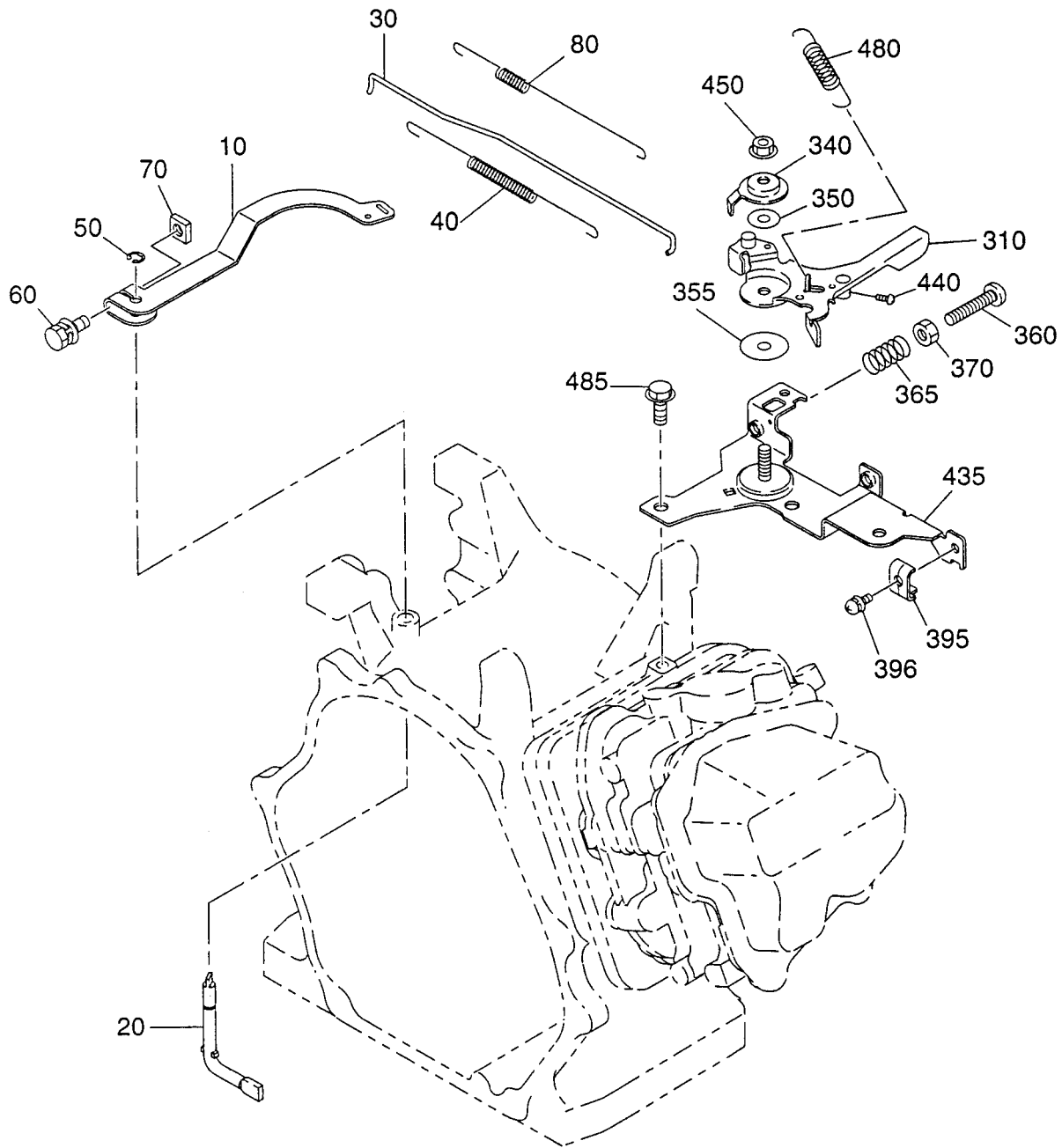
FIG. 400





SECTION 4 GOVERNOR GROUP - OLD STYLE

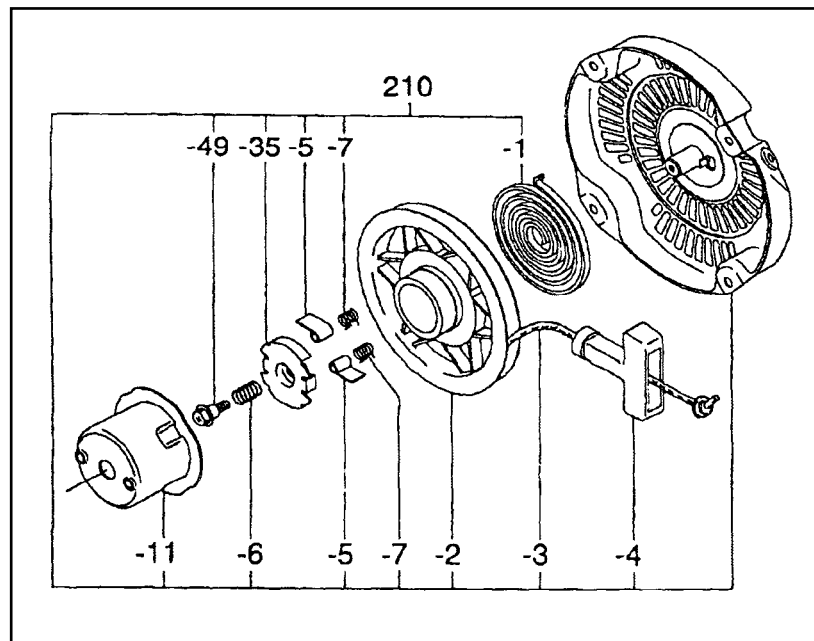
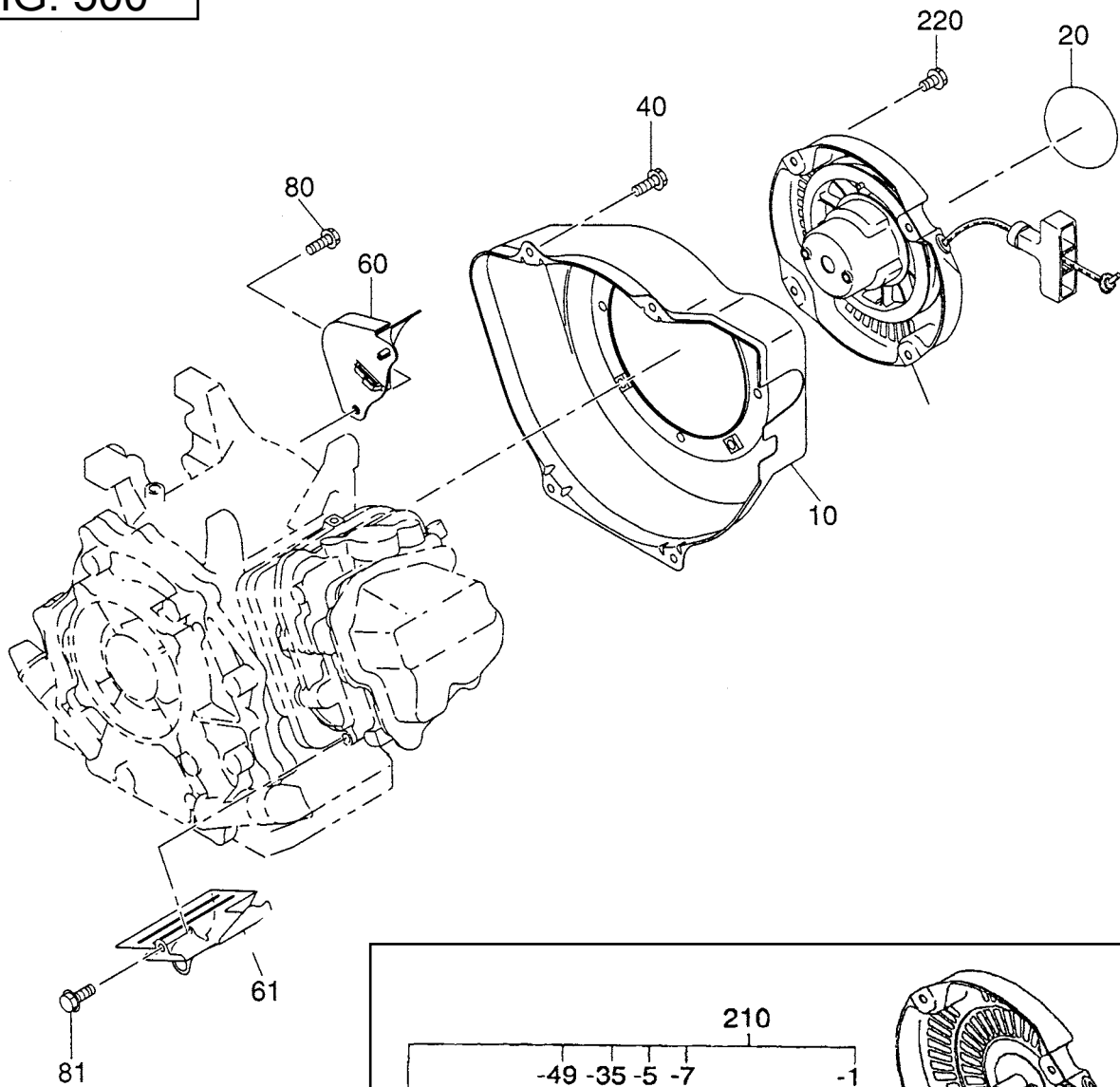
FIG. 400





SECTION 5 COOLING and STARTING GROUP

FIG. 500





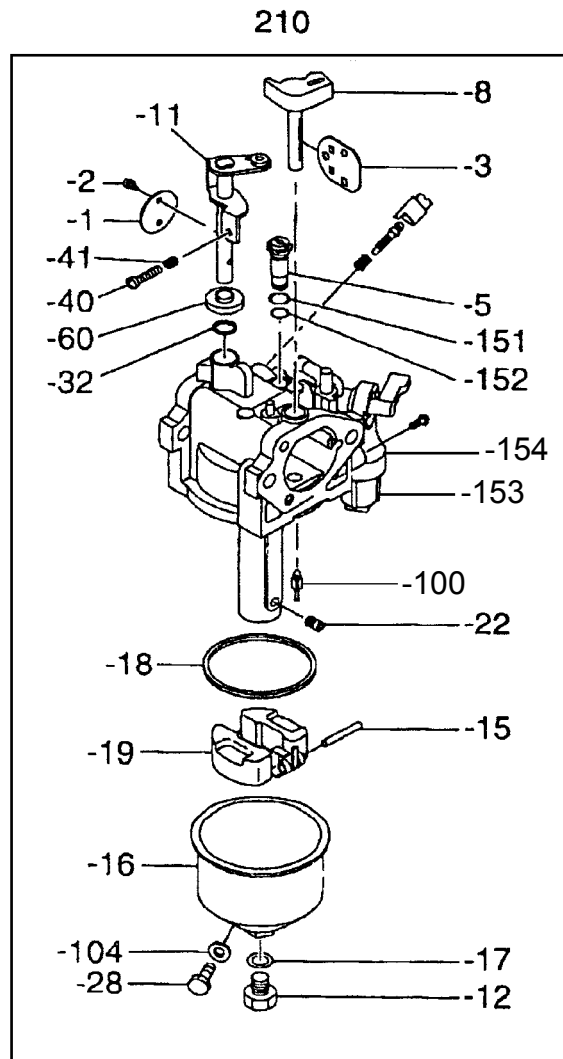






SECTION 6 FUEL, LUBRICATION GROUP

FIG. 610





SECTION 7 ELECTRIC DEVICE GROUP

FIG. 700

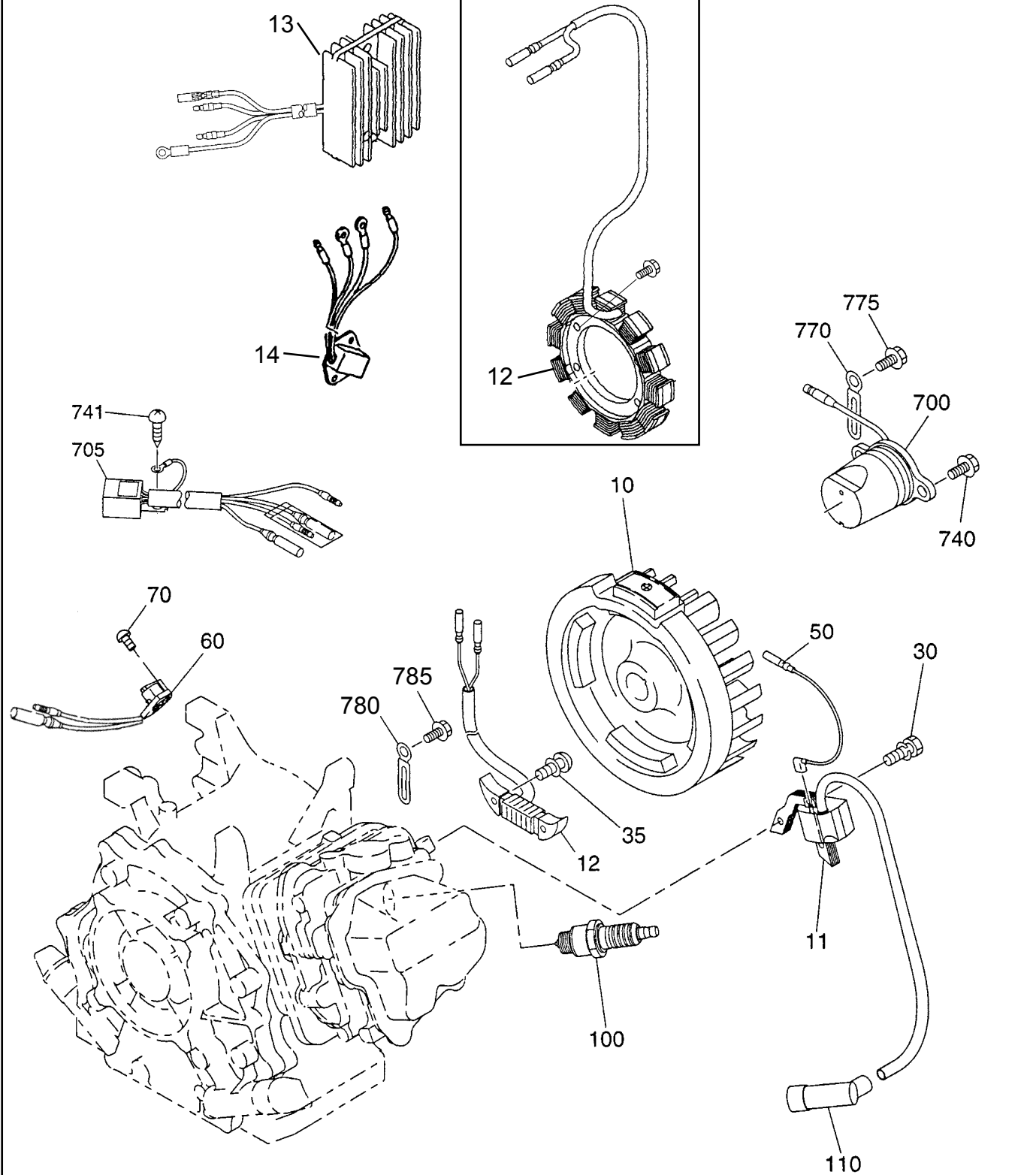
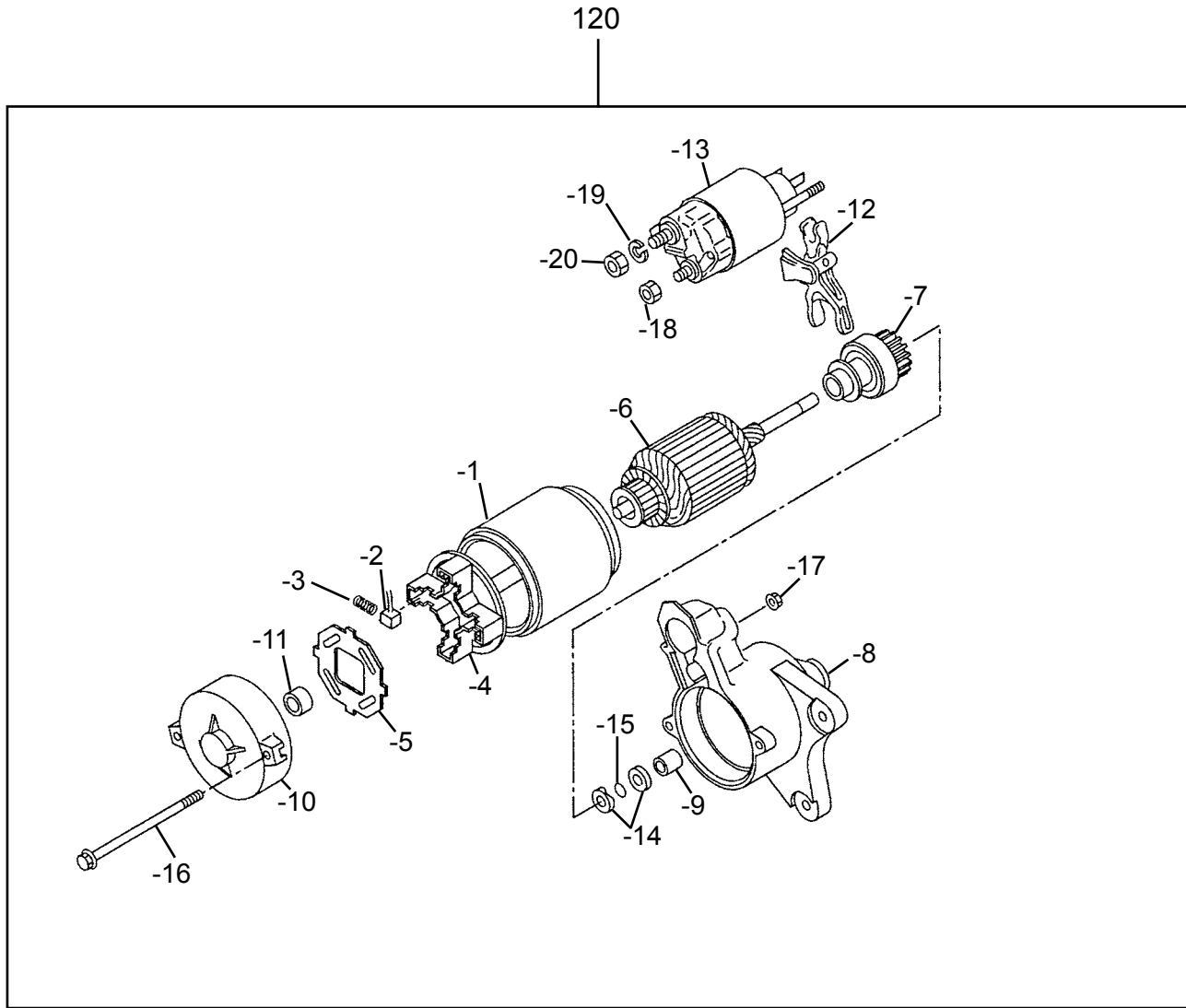




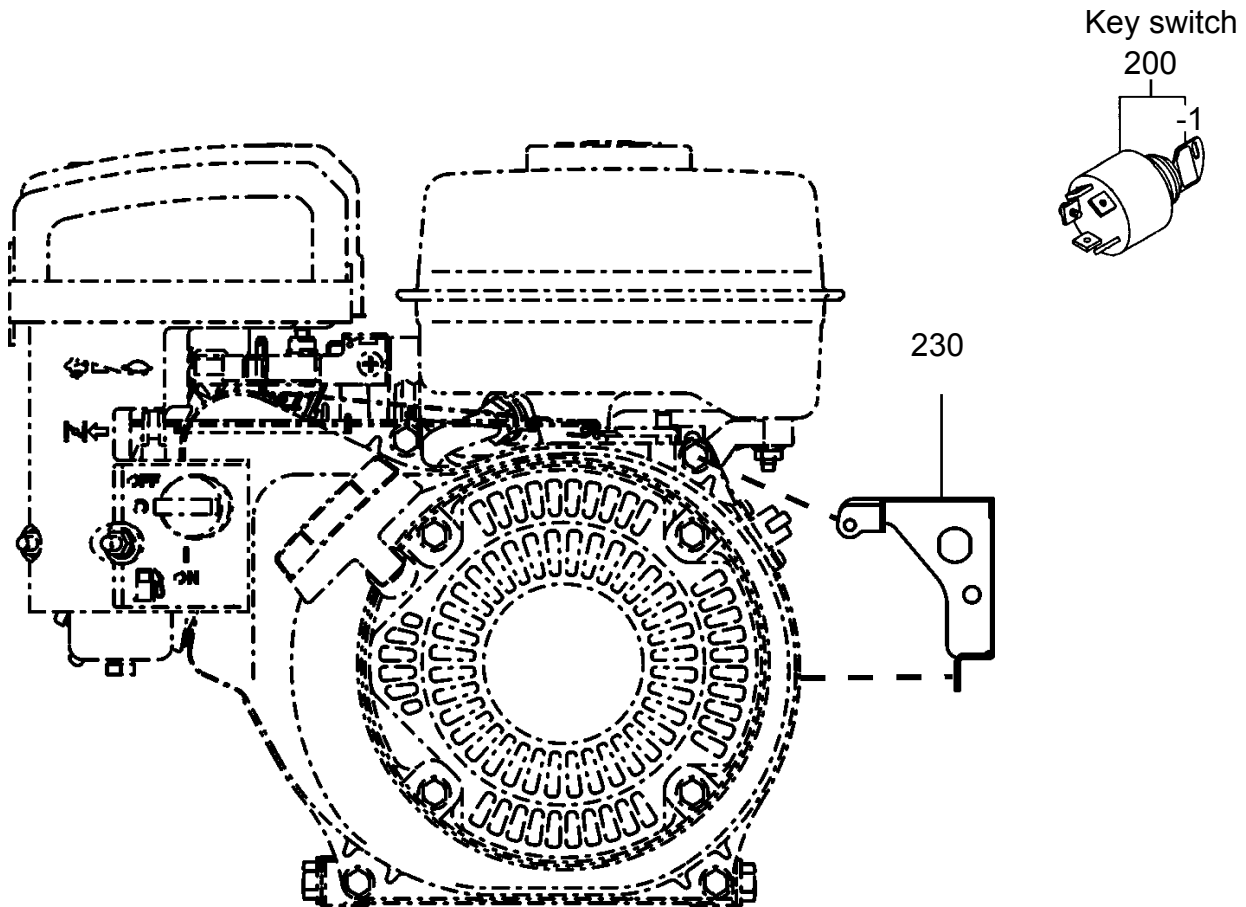
FIG. 710





SECTION 7 ELECTRIC DEVICE GROUP - CONTROL BOX

FIG. 720

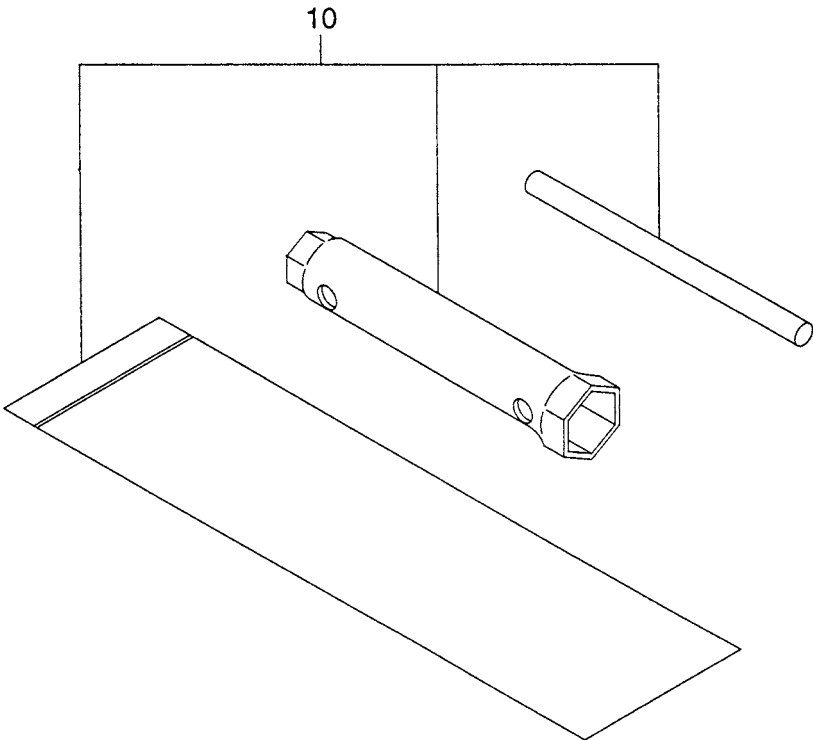






SECTION 9 ACCESSORY GROUP

FIG. 900





PRINTED IN THE USA